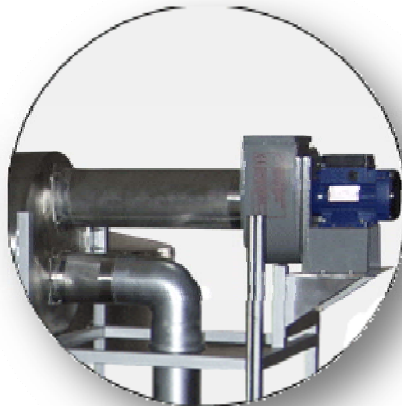
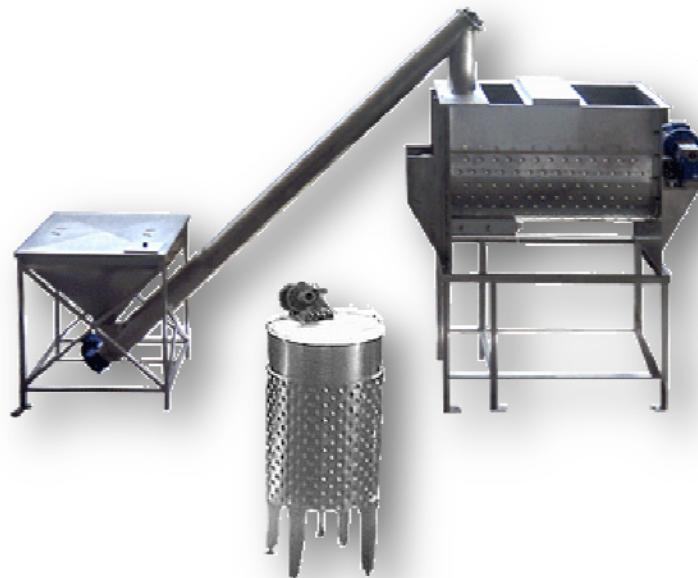




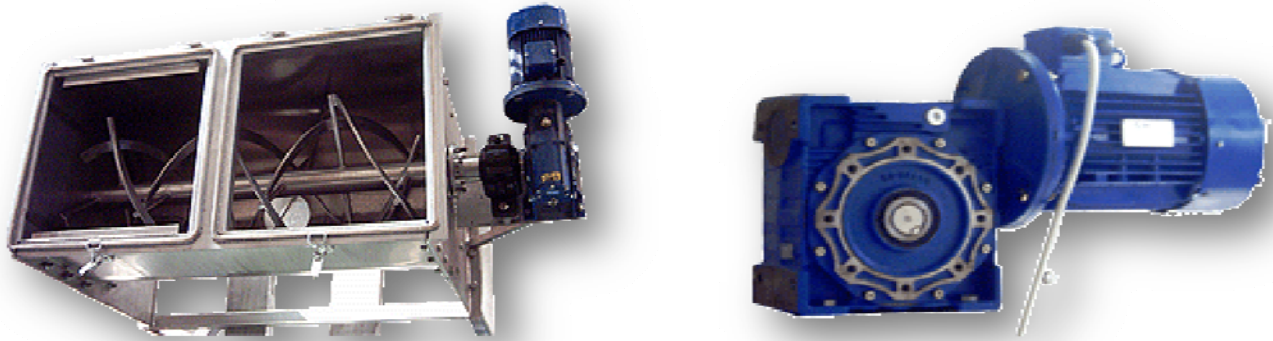
**Container for making chocolade**



**Ladle for soups**



**Details - Ladle for soups**



**Detail inside - Ladle for soups**



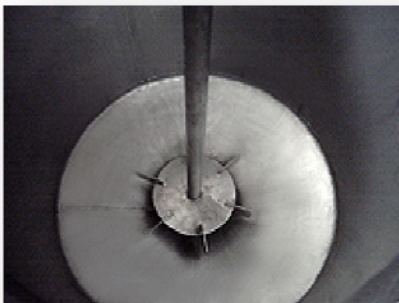
**Detail - slugen transporter - Ladle for soups**



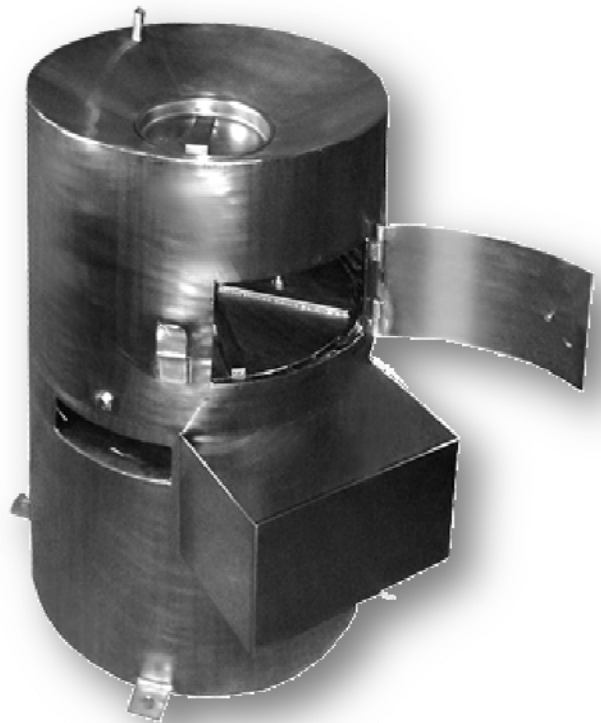
Duplicator with ladle



Detail - Duplicator with mixer



Machine for tripes



**Duplicator with mixer**



**Detail - Duplicator with manifold**



**Duplicator with manifold**



**Duplicator with blender**



Duplicator



Tank with manifold



Blender for aggressive materials



Tanks



The tanks for transport are assigned for transport of liquid and other stuffs in food, chemical and pharmaceutical industry. They are being made of stainless steel with characteristics proper to those of the transported matter.

The tanks with volume up to 3000 l are being placed directly on the base of the vehicle's trailer. Tanks with volume over 6000 l are being placed on a subsidiary foundation placed on the base of the vehicle. The tanks with volume over 12000 l, are being placed on the main base of the trailer (vehicle).

Depending on the conditions required for transport of a certain matter, the tanks may be isolated.

Electrolux-PALENZO -INOX does complete designing, performing and installing of tanks with volume up to 32000 L as well as previous preparation of the vehicle (setting a subsidiary foundation) accordingly to the ISO standards for transport of materials in food, chemical and pharmaceutical industry and provides attests.

Generally, Electrolux-PALENZO-INOX is designing and installing tanks on all kinds of rigid and draws bar combinations of vehicles with trailers and semi trailers.

**Bathtub**



**Fermentor**



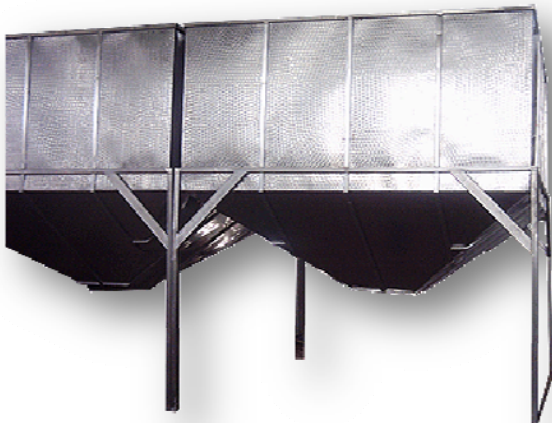
**Container for milk**



**Silo for plastic bottles**



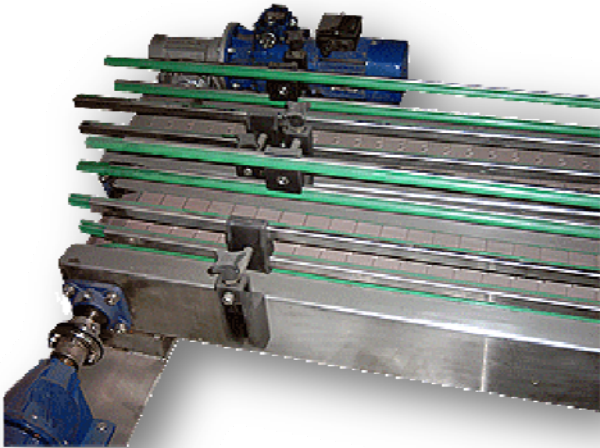
**Silo for plastic bottles**



**Infinitely transport lace**



Ininitely transport lace



Tanks



Tanks

