

DOMETIC COMFORT



Dual Energy Refrigerators

Cool comfort with
and without Electricity



 **Dometic**

The Sign of Comfort

■ Dometic.

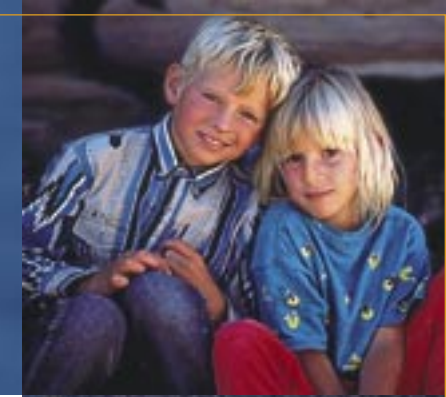
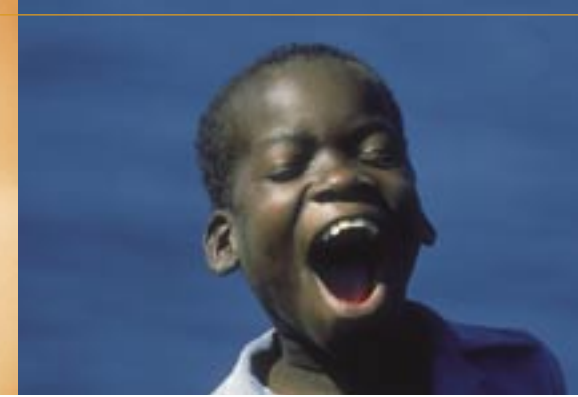
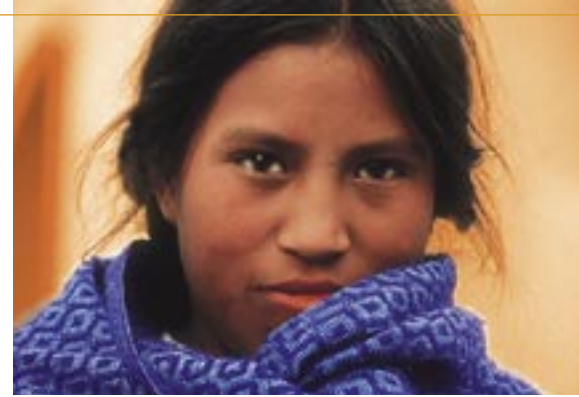
The Satisfaction Network.

Premium comfort guaranteed.

Dometic is a top manufacturer and an expert when it comes to feeling at home everywhere. Superior comfort for maximum satisfaction is what we continually strive for. Every item is just perfect, from design to assembly and service. This explains why Dometic keeps the No. 1 position worldwide. It has a lot to do with our expertise, accumulated in more than 8 decades. You can sense it, but you can't copy it.

Dual Energy Refrigerators: Cool comfort everywhere

The Dual Energy Refrigerators from Dometic can be used wherever you want. They work with electricity when there is a socket nearby. And with bottled Gas or Kerosene also, if electricity is not available. This double energy supply is only possible because of Dometic's unique Absorption system, developed more than 80 years ago and continuously improved ever since.



The Absorption Technology: Cool, silent, flexible. Simply perfect.

With regard to absolute comfort, Dometic Absorption fridges leave you the choice of energy. You can expect perfect cool performance in total tranquillity. No clicking, no humming, no noisy engine will disturb you.

Dometic

is a leading international supplier of special refrigeration and other products and systems that it develops, designs and manufactures for use in leisure applications, including recreation vehicles, pleasure boats and hotel rooms to meet specific end-user needs for increased comfort away from home. Dometic also supplies special refrigeration for medical applications. Dometic is organised in two business areas, RV and Pleasure Boat Systems and Special Refrigeration Systems. Dometic has production facilities in 10 countries, its own sales and marketing operations in 17 countries plus approximately 65 distributors globally. 2002 sales amounted to approximately 700 Mio. Euro and the number of employees to 4.000.

A Dual Energy Refrigerator operates completely secure and absolutely safe, noiseless and maintenance-free. You decide for a lifetime investment because of the superb quality. Doors and cabinets are made of galvanised steel, the walls are fully insulated with freon-free foam and provide excellent cooling performance. Dometic factories are certified as per ISO 9001, ISO 9002, ISO 14001 and the Eco-Audit - protecting the environment and ensuring top quality.

■ Quiet Bestsellers



► DOMETIC RGE 200

Comfort with gas and electricity: 103 litre (3.6 cu.ft.) volume including a full width Frozen Food compartment 12 litres (0.4 cu.ft.)

- Rust-proof, wire-grill shelves
- 3 adjustable racks at the inner door
- Bottom rack for 2-litre bottles and bottle fingers
- Interchangeable door hang
- Easy-to-hold door handle
- Control panel with AC switcher, electric and gas thermostat, piezo igniter and flame safety valve
- Voltages available: 120 V (60 Hz) and 230 V (60 Hz/50 Hz)

► DOMETIC RGE 300

This proven refrigerator comes with a total volume of 146 litre (5.2 cu.ft.) and a full width Frozen Food compartment of 15 litres (0.5 cu.ft.).

- Operation on Gas and Electricity
- Rust-proof, wire-grill shelves
- 4 adjustable racks at the inner door
- Bottom rack for large bottles with bottle fingers
- Interior lighting
- Interchangeable door hang
- Easy-to-hold door handle
- Control panel with fuel selector, electric and gas thermostat, piezo igniter and flame safety valve
- Voltages available: 120 V (60 Hz), 230 V and 240 V (60 Hz/50 Hz)

Not illustrated

► DOMETIC RGE 100

Compact outside, but with many storage space inside.

- Total capacity 70 litre (2.3 cu.ft.)
- Frozen Food compartment 6 litre (0.2 cu.ft.)
- Runs on Gas and Electricity
- Rust-proof, wire-grill shelves
- 2 adjustable racks at the inner door
- Bottom rack for large bottles with bottle fingers
- Interchangeable door hang
- Easy-to-hold door handle
- Control panel with fuel selector, electric and gas thermostat, piezo igniter and flame safety valve
- Voltages available: 110 V (60 Hz) and 230 V (60 Hz/50 Hz)

■ Total comfort

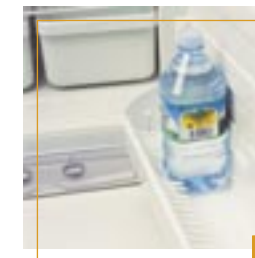
► DOMETIC RGE 400

A total capacity of 224 litre (7.9 cu.ft.) with a separate Frozen Food compartment of 47 litre (1.7 cu.ft.) offer you maximum storage capacity.

- Runs on Gas and Electricity
- Rust-proof, wire-grill shelves
- Inner door with 4 adjustable racks
- Bottom rack for 2-litre bottles with bottle fingers
- Interior lighting
- Interchangeable door hang
- Easy-to-hold door handle
- Control panel with fuel selector, combined electric and gas thermostat, piezo igniter and flame safety valve
- Voltages available: 120 V (60 Hz), 230 V and 240 V (60 Hz/50 Hz)



Thanks to an easy-to-hold handle the doors open and closes firmly at a touch.



Generous bottle racks inside the door with patented „bottle fingers“ which prevent the bottles from moving.



Interior battery lighting ensures a good view even in the dark of the night (300 and 400 models).



	RGE 100	RGE 200	RGE 300	RGE 400
Volume				
- Total, litre (cu.ft.)	70 (2.3)	103 (3.6)	146 (5.2)	224 (7.9)
- Refrigerator	64 (2.1)	91 (3.2)	131 (4.7)	177 (6.2)
- Freezer	6 (0.2)	12 (0.4)	15 (0.5)	47 (1.7)
Net weight, kg (lbs)	27 (59)	33 (73)	58 (127)	76 (167)
Maximum input, Watt				
- Electricity:				
110/120/230/240 V	130	125	195	325
- Gas:				
Propane 28 mBar	177	-	-	-
Propane 30 mBar	-	252	400	500
Propane/Butane 30 mBar	189	-	-	-
Propane 37 mBar	-	-	400	500
Propane 50 mBar	-	252	370	480
Propane/Butane 50 mBar	207	-	-	-
Energy consumption*				
- Electric, kWh/24 h.	2.4	2.6	2.2	3.9
- Gas, g/24 h	275	270	400	500
Dimensions				
- HxWxD, mm	600 x 525 x 543	811 x 525 x 541	1.176 x 592 x 673	1.613 x 592 x 673
- HxWxD, inch	23.6 x 20.7 x 21.4	31.9 x 20.7 x 21.3	46.3 x 23.3 x 26.5	63.5 x 23.0 x 26.5

* Energy consumption in 24 h at 25 ° C ambient temperature according to ISO standards. Subject to alteration and error without notice.

■ Comfort from Kerosene



▶ DOMETIC RKE 300

Operating with Kerosene and mains, this model offers a total volume of 146 litre (5.2 cu.ft.) inclusive the Full width Frozen Food compartment of 15 litre (0.5 cu.ft.).

- Rust-proof, wire-grill shelves
- 4 adjustable racks at the inner door
- Bottom rack for 2-litre bottles and bottle fingers
- Interior lighting
- Interchangeable door hang
- Easy-to-hold door handle
- Base control panel with wick adjustment knob, kerosene level pin indicator and electric thermostat - perfectly ventilated thanks to optimal airflow openings
- Kerosene tank 9.5 litres (0.4 cu.ft.)
- Voltages available: 120 V (60 Hz), 230 V and 240 V (60 Hz/50 Hz)

▶ DOMETIC RKE 400

Enjoy double comfort with a separate Frozen Food compartment of 47 litre (1.7 cu.ft.).

- Total capacity 224 litre (7.9 cu.ft.)
- Kerosene and Electricity operation
- Rust-proof, wire-grill shelves
- 4 adjustable racks at the inner door
- Bottom rack for 2-litre bottles and bottle fingers
- Interior lighting
- Interchangeable door hang
- Easy-to-hold door handle
- Base control panel with wick adjustment knob, kerosene level pin indicator and electric thermostat
- Large airflow opening for perfect ventilation
- Kerosene tank 9.5 litre (0.4 cu.ft.)
- Voltages available: 120 V (60 Hz), 230 V and 240 V (60 Hz/50 Hz)



The kerosene tank is easily accessible. Refilling takes just minutes.

■ Cool chest

▶ DOMETIC RC 230

Especially designed to function equally well as a refrigerator, bottle cooler and freezer. Available as Kerosene/Electricity version also (RC 230 KET).

- Runs with bottled Gas and Electricity
- Large storage capacity: 230 litre (8 cu.ft.), i.e. 11 cases 300 ml- bottles or 264 300 ml-bottles (corded)
- Dual gas/electric thermostat
- Lockable lid
- 3 strong baskets as standard
- Available for 120 V (60 Hz), 230 V and 240 V (60 Hz/50 Hz) operation



	RKE 300	RKE 400	RC 230 GET	RC 230 KET
Volume				
- Total, litre (cu.ft.)	146 (5.2)	224 (7.1)	230 (8.0)	230 (8.0)
- Refrigerator	131 (4.7)	177 (6.2)	-	-
- Freezer	15 (0.5)	47 (1.7)	-	-
Net weight, kg (lbs)	63 (138)	86 (189)	86 (189)	92 (202)
Maximum input, Watt				
- Electricity:				
110/220/230/240 V	-	-	375	375
120/230/240 V	375	325	375	375
- Gas:				
Butane 28 mBar	-	-	400	-
Propane 30 mBar	-	-	400	-
Propane/Butane 30 mBar	-	-	400	-
Kerosene	400	400	-	-
Energy consumption*				
- Electric, kWh/24 h.	2.15	3.9	-	-
- Gas, g/24 h	-	-	650	-
- Kerosene, l/24 h	0.5	0.9	-	1.97
Dimensions				
- HxWxD, mm	1.353 x 592 x 673	1.790 x 592 x 690	855 x 1.156 x 690	1.040 x 1.156 x 750
- HxWxD, inch	53.3 x 23.3 x 26.5	70.5 x 23.3 x 27.2	34 x 46 x 27.2	41 x 46 x 30
Kerosene tank, l (cu.ft.)	9.5 (0.4)	9.5 (0.4)	-	18 (0.8)

* Energy consumption in 24 h at 25 ° C ambient temperature according to ISO standards. Subject to alteration and error without notice

■ Container load information

	20-foot container	40-foot container	40-foot container high-cube
RGE 100	81 units	171 units	-
RGE 200	72 units	153 units	-
RGE 300	37 units	78 units	102 units
RGE 400	33 units	71 units	72 units
RKE 300	36 units	76 units	76 units
RKE 400	24 units	51 units	69 units
RC 230 GET	30 units	60 units	-
RC 230 KET	30 units	60 units	-

Australia

Dometic Pty Ltd.
Phone + 61 395 455 655
Fax + 61 395 455 966
dometic@dometic.com.au

Bangladesh

Unity Services Ltd.
Phone + 880 2 988 1306
Fax + 880 2 988 3025
modunity@bdmail.net

Canada

Dometic Corporation
Phone + 1 519 653 4390
Fax + 1 519 653 4243
lodging@dometicusa.com

Croatia

Optimist d.o.o.
Phone + 385 1 2308 094
Fax + 385 1 2336 386
optimist@net.hr

Cyprus

Hadjikyriakos & Sons Ltd.
Phone +357 22 872 111
Fax +357 22 663 391
info@hadjikyriakos.com.cy

Denmark

Dometic AB
Phone +45 45 26 45 50
Fax +45 45 26 45 59
info@dometic.dk

Egypt

Basco Engineering & Trading
Phone +20 2 2906997
Fax +20 2 2906774
basco@link.net

Finland

Dometic Oy
Phone +358-9-68 66 110
Fax +358-9-68 66 11 22
info@dometic.fi

Greece

Samaras Bros.
Phone + 30 2310 321 091
Fax + 30 2310 321 090
poliet96@otenet.gr

Hong Kong/Macau/China

Dometic Pte Ltd
Phone + 852 2489 9228
Fax + 852 2489 9279
louis@dometic.com.hk

Hungary

Dometic Rt.
Phone + 36 57 41 6371
Fax + 36 57 41 6490
erzsebet.nemes@dometic.hu

India / Nepal

Eagle Forgings
Phone + 91 11 26918430
Fax + 91 11 26845484
akeagle@mantraonline.com

Indonesia

P.T. EMS Indoappliances
Phone + 62 21 830 5746
Fax + 62 21 831 7215
emsindo@cbn.net.id

Iran

Tarani Technical & Trading
Phone +98 21 871 9612/13
Fax +98 21 872 8030
info@taranico.com

Israel

Hotelo Ltd
Phone +972 3 927 9713
Fax +972 3 927 9716
gideon.bs@hotelo.com

Korea

Hotel Restaurant Services
Phone + 82 2 3453 5000
Fax + 82 2 3453 5001
hschung@hrs.co.kr

Lebanon

Electro Group S.A.R.L.
Phone + 961 1 398 558
Fax +961 1 397 201
cckgpn@netgate.com.lb

Malaysia

EMS Asia Group SDN.BHD
Phone + 603 55 69 3968
Fax + 603 55 6939 69
siva@ems-asiagroup.com

Malta

Forestals Group of Companies
FGL Commercial Sales Ltd.
Phone +356 2343 6000
Fax +356 2134 4709
atabone@forestals.com

New Zealand

Leisure Appliances New Zealand Ltd.
Phone + 64 4 380 9392
Fax + 64 4 380 9398
customerservices@nzleisure.co.nz

Norway

Dometic AB
Phone +47 81 50 01 40
Fax +47 22 63 55 66
truls.lie@dometic.no

Oman

Bahwan Trading Co. LLC.
Phone + 968 793 741
Fax + 968 700 442
ceg@suhailbahwargroup.com

Philippines

Technolux
Phone + 632 896 4941
Fax + 632 899 4528
rgs@technolux.net

Poland

Electrolux Poland Sp. Zo.o.
Phone + 48 22 434 73 00
Fax + 48 22 434 73 02
renata.fedorowicz@electrolux.com

Singapore

Dometic Pte. Ltd.
Phone + 65 6 795 3177
Fax + 65 6 862 6620
dometic@dometic.com.sg

Slovenia

Team Commerce D.O.O.
Phone + 386 5 6300760
Fax + 386 5 6284 367
info@team-commerce.si

Sri Lanka

S.A. Electricals Pvt. Ltd.
Phone + 94 1 2693265
Fax + 94 1 2691754
jakbs@dialogsl.net

Sweden

Dometic AB
Phone + 46 8 501 025 31
Fax + 46 8 501 025 98/99
yvonne.riddervik@dometic.se

Taiwan

The Eslite Corporation
Phone + 886 2 2503 7687
Fax + 886 2 2506 9372
jacksai@eslite.com.tw

Thailand

Thanakorn Holding Co. Ltd.
Phone + 66 2 718 0118
Fax + 66 2 718 0088
thanakorn.thai@usa.net

Turkey

Enta A.S.
Phone + 90 212 292 8900
Fax + 90 212 245 4731
info@entaturk.com

UK / Ireland

Dometic Ltd.
Phone + 44 1 582 494 111
Fax + 44 1 582 490 197
info@dometic.co.uk

United Arab Emirates

Jumbo Electronics Co. Ltd. (LLC)
Phone + 971 4 336 7 999
Fax +971 4 336 0 495
dometic.minibar@jumbo.co.ae

USA

Dometic Corporation
Phone + 1 574 294 8665
Fax + 1 574 294 3369
lodging@dometicusa.com

Vietnam

Do Business Consulting
Phone + 84 8 8242426
Fax + 84 8 8242428
dbconslt@hcm.vnn.vn

Regional Office**South Africa**

Dometic (PTY) Ltd.
Phone + 27 13 933 3254
Fax + 27 13 933 3030
jackie.oneill@eleisure.co.za

Regional Office**Asia**

Dometic Pte. Ltd.
Phone + 65 6 795 3178
Fax + 65 6 862 6620
chandra8@dometic.com.sg

Regional Office**Middle East & North Africa**

Dometic AB
Phone + 971 4 321 2160
Fax + 971 4 321 2170
dometic@emirates.net.ae

Export Office**Stockholm**

Dometic AB
Phone + 46 8 501 025 00
Fax + 46 8 501 025 98
sales@dometic.se

Regional Office**Northern Latin America and The Carribean**

Dometic MX
Phone + 52 55 52 09 84 29
Fax + 52 55 52 09 85 95
jesus.martinez@electrolux.com

Regional Office**Mercosur and Chile**

Dometic do Brasil Ltda.
Phone + 55 11 3443 6954
Fax + 55 11 3443 7100
info@dometic.com.br

www.dometic.com

Dometic AB

Torggatan 8
S-171 54 Solna/Sweden
Phone +46 8 501 025 00
Fax +46 8 501 025 99
info@dometic.se

 **Dometic**

The Sign of Comfort