



Spare parts suitable for:
VISACREM

Spare parts suitable for coffee machines



G.E.V. Großküchen-Ersatzteil-Vertrieb GmbH
Robert-Koch-Straße 3a
82152 Planegg/Munich
Germany

Phone: +49 (0)89 745572-0
Fax: +49 (0)89 745572-83
order@gev-online.com
www.gev-online.com

Member of the  **GEV GROUP**

Solenoid valves

Scem/Parker

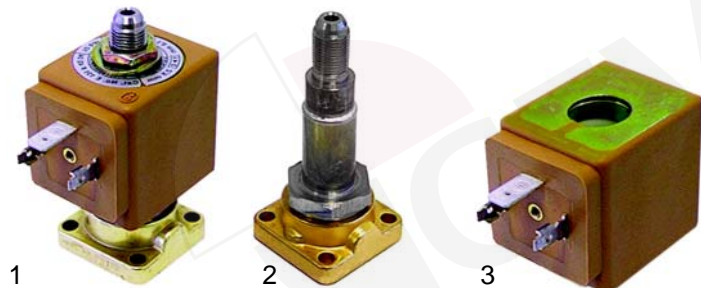


Item	Order	Description
1	370057	cpl., 3 ways, 230V AC
2	370060	cpl., 3 ways, with cable, 230V AC
3	370062	Solenoid square base



Item	Order	Description
1	370212	cpl., 3 ways, 230V AC
2	370206	cpl., 2 ways, 230V AC
3	371029	Magnetic coil, 230V AC
4	371033	Magnetic coil, with cable, 230V AC

Scem/Parker



Item	Order	Description
1	370053	cpl., 3 ways, 230V AC
2	370061	Solenoid square base, 3 ways
3	371031	Magnetic coil, 230V AC

Solenoid valves

ODE



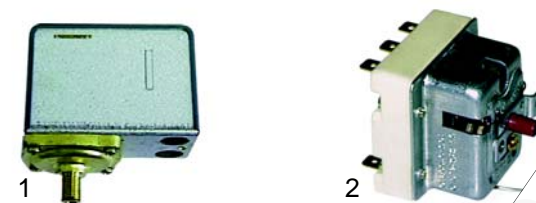
Item	Order	Description
1	370203	cpl., 3 ways, 230V AC
2	370208	cpl., 1/8", 2 ways
3	371150	Magnetic coil, 230V AC

Accessories



Item	Order	Description
1	371090	Plug/big
2	371095	O-ring (viton)
3	371100	O-ring (silicon)

Pressure switches, thermostats

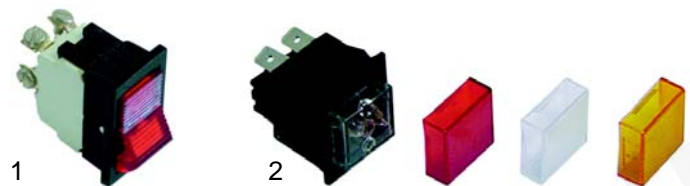


Item	Order	Description
1	541021	Pressure switch, 3 poles
2	390166	Safety thermostat, 3 poles

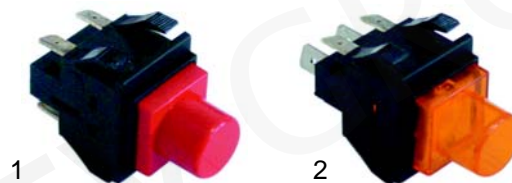
Switches



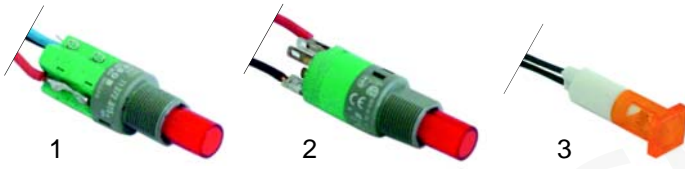
Item	Order	Description
1	346084	Switch, 2 poles
2	346085	Button
3	346037	Push button
4	345105	Micro switch



Item	Order	Description
1	346036	Switch, 2 poles
2	345033	Switch, 2 poles



Item	Order	Description
1	346128	Push button (GX)
2	346129	Switch (GX)



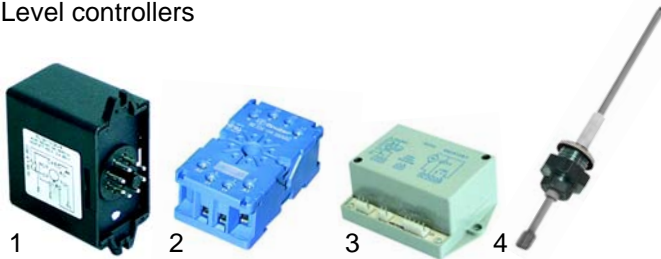
Item	Order	Description
1	346130	Switch (KB)
2	346131	Switch (KB)
3	346132	Signal lamp (KB)

Switches



Item	Order	Description
1	346133	Switch(yellow (KB)
2	346134	Switch/red (KB)
3	346135	Signal lamp (KB)

Level controllers



Item	Order	Description
1	400237	Level controller, RL30/1E-2C/8, Gicar 9.1.00.10
2	380137	Base, 8 poles
3	400422	Level controller
4	400020	Level probe, 150mm

Relays



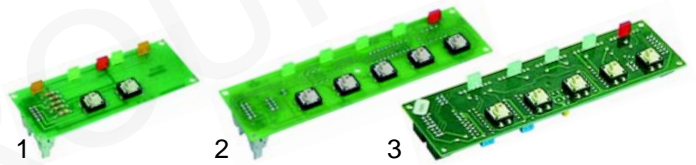
Item	Order	Description
1	380475	Relay, 230V

Flow meter

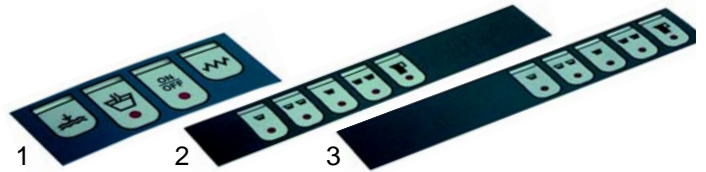


Item	Order	Description
1	400004	Flowmeter, 1/4"
2	400256	Plugs
3	400257	Flowmeter turbine
4	400258	Case gasket

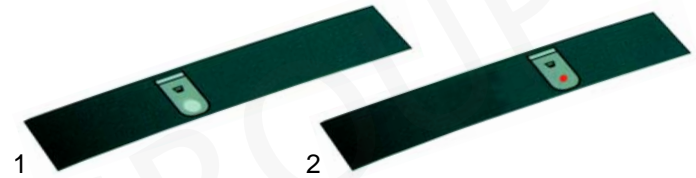
Key push buttons



Item	Order	Description
1	400381	Key push button/Service (KB)
2	400380	Key push button, 1 group (KB)
3	400501	Key push button, 2 - 4 groups (KB)



Item	Order	Description
1	400502	Push button panel/Service (KB)
2	400384	Push button panel/right (KB)
3	400383	Push button panel (KB)



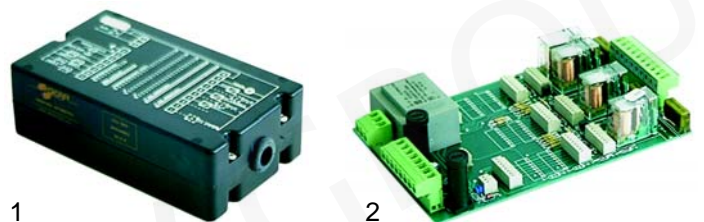
Item	Order	Description
1	400503	Push button panel/On-Out-Right
2	400386	Push button panel/group

Key push buttons

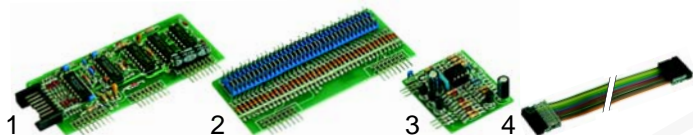


Item	Order	Description
1	400504	Push button panel (GX)

Electronics



Item	Order	Description
1	400327	Electronic box/cpl., 2 groups
1	400483	Electronic box/cpl., 3 groups
2	400328	Base board, 2 groups
2	400484	Base board, 3 groups



Item	Order	Description
1	400331	Group board
2	400330	Dosing board
3	400329	Level controller board
4	400332	Connection cable/key push button, 2 groups
4	400485	Connection cable/key push button, 3 groups

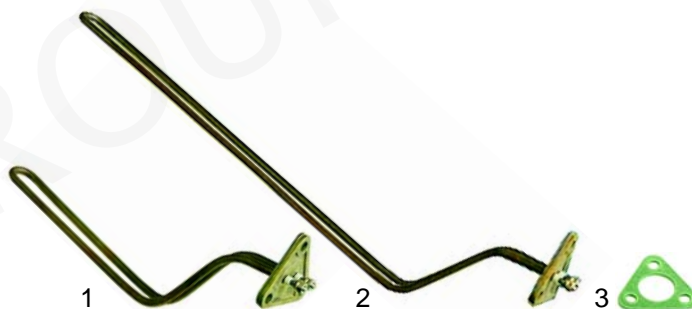
Elements

With immersion socket



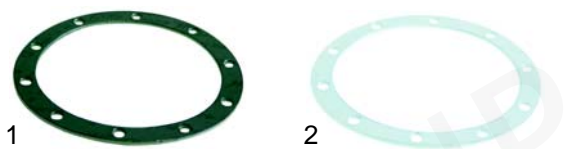
Item	Order	Description
1	417116	1 group, 1800W, 230V
2	417001	2 groups, 2600W, 230V
3	417109	3 groups, 3700W, 230V

Elements



Item	Order	Description
1	417151	2 group, 1300W, 230V
2	417152	3 groups, 1900W, 230V
2	417153	3 groups, 1900W/400V
3	528008	Element gasket (klingerit)
3	528740	Element gasket (teflon)

Boiler gaskets



Item	Order	Description
1	528166	Gasket (klingerit)
2	528741	Gasket (teflon)



Item	Order	Description	Model
1	528930	Gasket	KB
2	528931	Gasket (Modern)	KB

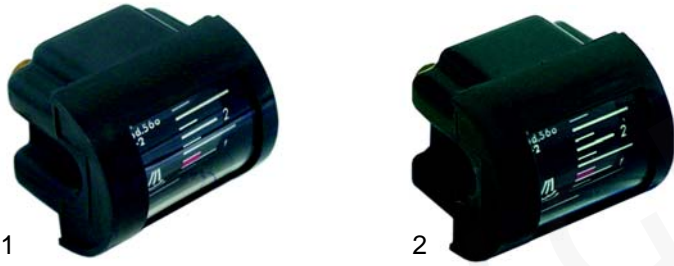
Manometers



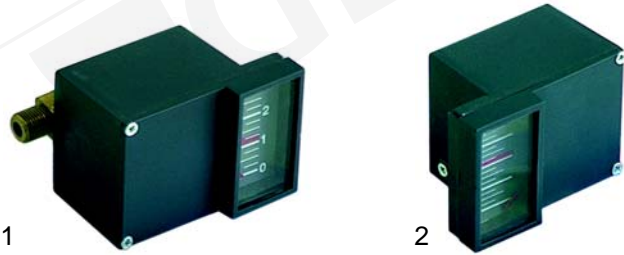
Item	Order	Description
1	541244	Manometer, 0 - 3 bar
2	541246	Manometer, 0 - 12 bar
3	541245	Manometer, 0 - 24 bar



Item	Order	Description
1	541236	Manometer (GX), 0 - 3 bar
2	541238	Manometer (GX), 0 - 18 bar



Item	Order	Description
1	541237	Manometer (GX), 0 - 3 bar
2	541239	Manometer (GX), 0 - 18 bar



Item	Order	Description
1	541241	Manometer (KB), 0 - 3 bar
2	541240	Manometer (KB), 0 - 16 bar

Valves

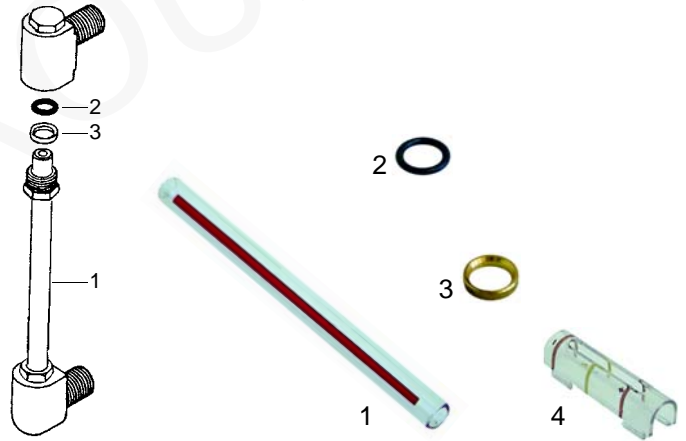


Item	Order	Description
1	529312	Safety valve, 1,8 bar, 3/8"
2	529316	Safety valve/sealed, 1,8 bar, 3/8"
3	529303	Empty valve (stainless steel), 1/4"
4	529361	Cu-gasket, 1/4"
5	529349	Cu-gasket, 3/8"



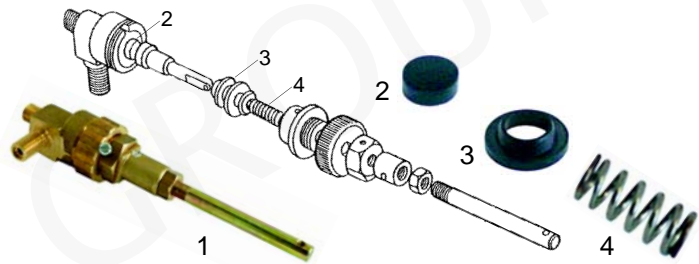
Item	Order	Description
1	529317	Expansion valve
2	529301	Non-return valve (outer), 3/8"
3	529346	Non-return valve (inner), 3/8"

Water level glass



Item	Order	Description
1	529429	Water level
2	528745	O-ring
3	528682	Pressure washer
4	529434	Plastic cap

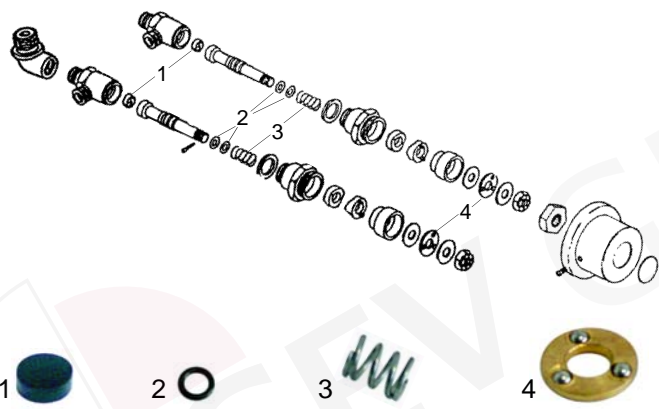
Water inlet valve



Item	Order	Description
1	529854	Water inlet valve/cpl., 1/4" (GX)
2	528742	Washer
3	528750	Gasket
4	528749	Spring



Item	Order	Description
1	528746	Water inlet valve (C70/80)

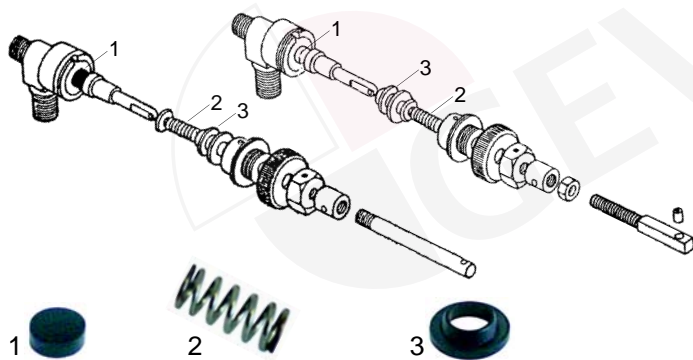


Item	Order	Description
1	528742	Washer
2	528400	O-ring
3	528743	Spring
4	528935	Support

Taps



Item	Order	Description
1	528748	Tap (Steam/water) /cpl. (GX)
2	529856	Tap (Steam/water) /cpl. (KB)
3	528932	Handle (KB)
4	528933	Spring (KB)



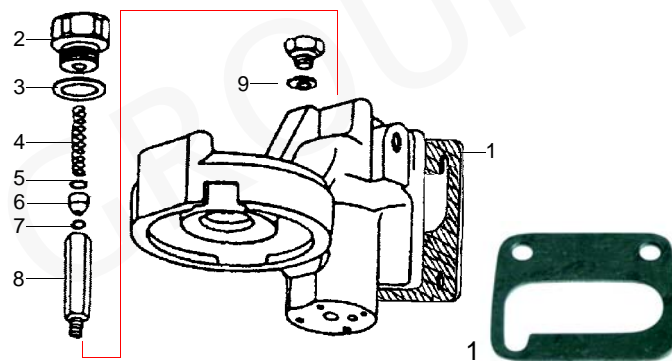
Item	Order	Description
1	528742	Washer
2	528749	Spring
3	528750	Gasket

Pipes

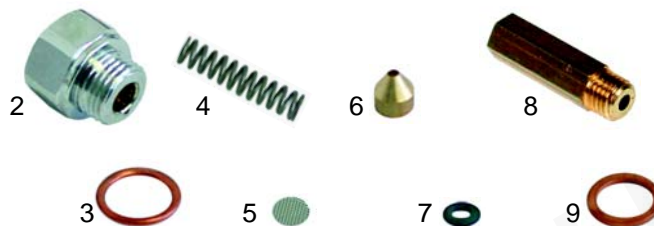


Item	Order	Description
1	529857	Steam pipe/left
1	529858	Steam pipe/right
2	529859	Water pipe
3	528401	Gasket
4	528184	Spring
5	528653	Washer
6	528654	Bush (nylon)
7	528655	O-rig

Group



Item	Order	Description
1	528763	Group gasket



Item	Order	Description
2	528659	End cap
3	528520	Gasket
4	528668	Spring
5	528669	Filter
6	528670	Jet
7	528765	O-ring (viton)
8	528766	Extension, M6
8	528767	Extension, M8
9	528662	Cu-Gasket

Shower



Item	Order	Description
1	529081	Divider (KB)
2	529080	Shower (KB)
3	529092	Shower (GX + KB old)

Filter holder gaskets



Item	Order	Description
1	528033	Shim gasket, 71 x 68mm
2	528030	Filter holder gasket, 73 x 57 x 8mm
2	528031	Filter holder gasket, 73 x 57 x 8,5mm
2	528032	Filter holder gasket, 73 x 57 x 9mm
3	529079	Filter holder spring

Filters



Item	Order	Description
1	529021	Filter, 1 cup (7g)
2	529022	Filter, 2 cups (14g)
3	529023	Blank filter

Filter holder



Item	Order	Description
1	529054	Filter holder
2	529111	Filter holder handle
3	529112	Filter holder handle
4	528693	Srew, M8 x 20

Filter holder



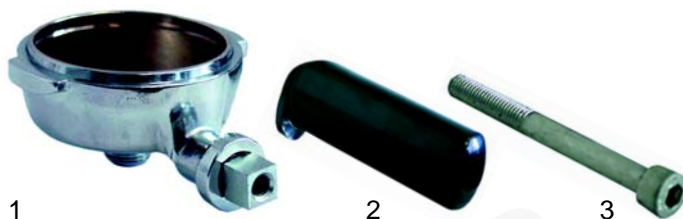
Item	Order	Description
1	529055	Filter holder, M10
2	529053	Filter holder handle, M10

Filters



Item	Order	Description
1	529012	Filter, 1 cup (6g)
1	529011	Filter, 1 cup (7g)
2	529014	Filter, 2 cups (12g)
2	529013	Filter, 2 cups (14g)
3	529023	Blank filter

Filter holder



Item	Order	Description
1	529150	Filter holder
2	529112	Handle
3	529123	Screw



Item	Order	Description
1	529041	Filter holder, M12
2	529045	Filter holder handle, M12

Spouts



Item	Order	Description
1	529001	Spout 3/8", one way long
2	529003	Spout 3/8", one way curved
3	529007	Spout 3/8", two way short

