



Електролуks Electrolux

Ovaj crtez e sopstvenost na Electrolux-Bitola.Bez negovo pismeno odobruvanje istiot nesmee da se prepisuva , umozuva niti kopira bez soglasnost od **Електролуks** vo sprotivno se snosat posledici vo smislana clenovite 163 i 164 od kniviciot zakon R.M. (povreda na avtorsko pravo)

OTPORNICI RESISTORS



KONČAR

Electrolux is registered trademark of **Електролуks** companies in Macedonia and other countries



Adresa: ul.Braka Mingovi 18, 7000 Bitola; tel: 047/203-330 ,203 900ul.A.Guslarot.1a 02/329 8 130 Skopje

www.electrolux.com.mk www.elektroluks.com.mk electrolux@mt.net.mk



OTPORNICI

OSNOVNI OTPORNI ELEMENTI

V	Otporni limeni element	str. 5
M	Otporni limeni element	str. 5
PC	Žičani otpornik	str. 8/9

IZVEDBE OTPORNIKA

OTPORNICI S LIMENIM OTPORNIM ELEMENTIMA M/V

OSV	Otporni slog s limenim elementima V	str. 6
OSM	Otporni slog s limenim elementima M	str. 7
OL	Otporni slogovi M ugrađeni u kućišta	str. 10
OL, OLR, OLK	Otporni slogovi V ugrađeni u kućišta	str. 11

OTPORNICI S ŽIČANIM OTPORNIM ELEMENTIMA PC

PC	Otpornici PC bez nosača	str. 8
L1 - Z3	Otpornici PC na nosačima	str. 9
OPC	Otpornici PC ugrađeni u kućišta	str. 10

SPECIJALNI OTPORNICI

OUN	Otpornici za uzemljenje nultčke transformatora	vidi katalog OUN	str. 14
OUG	Otpornici za uzemljenje nultčke generatora	na upit	str. 14
OR	Otpornici za pražnjenje aku-baterija	na upit	str. 14
OV	Otpornici s prisilnom ventilacijom	na upit	str. 15
PU	Uljni rotorski pokretači	vidi katalog PU	str. 15

RESISTORS

RESISTANCE ELEMENTS

V	Sheet-steel element	page 5
M	Sheet-steel element	page 5
PC	Wire wounded resistor	page 8/9

RESISTORS DESIGN

RESISTORS WITH SHEET-STEEL ELEMENTS M/V

OSV	Resistor set with sheet-steel elements V	page 6
OSM	Resistor set with sheet-steel elements M	page 7
OL	Resistor sets M placed in standard enclosures	page 10
OL, OLR, OLK	Resistor sets V placed in standard enclosures	page 11

WIRE WOUND RESISTORS PC

PC	Resistors PC without frames	page 8
L1 - Z3	Resistors PC with frames	page 9
OPC	Resistors PC placed in standard enclosures	page 10

SPECIAL RESISTORS

OUN	Transformer neutral earthing resistors	see cat. OUN	page 14
OUG	Generator neutral earthing resistors	on request	page 14
OR	Resistors for battery discharge	on request	page 14
OV	Resistors with forced ventilation	on request	page 15
PU	Oil rotor starters	see cat. PU	page 15

KONČAR



IZVEDBE

Otpornici se izraduju u dvije osnovne izvedbe:

- Otpornik izraden od otporne žice namotane na porcelanske cilindre (str. 8).
Namotani cilindri (PC) složeni na olovire smješteni su u standardna kućišta (OPC).
- Otporni slogovi (str. 6 i 7) sastavljeni od otpornih elemenata (tab. 1) izradenih od antikorozivnog istegnutog lima. Spajanjem elemenata točkastim zavarivanjem eliminirani su prolazni otpori između elemenata. Standardno, slogove se ugrađuje u kućišta OL, OLR i OLK.

NAZIVNI NAPON IZOLACIJE

Otpornici s limenim elementima	1000 V AC / 1200 V DC
Žičani otpornici	500 V AC / 600 V DC

Na zahtjev izradujemo otpornike za više napone.

KUĆIŠTA

Stupanj mehaničke zaštite (sukladno normi IEC60629)

IP10 - Kućište za smještaj otpornika u zatvorenom prostoru. Zaštitni plašt od istegnutog lima osigurava dobro hlađenje prirodnom cirkulacijom zraka.

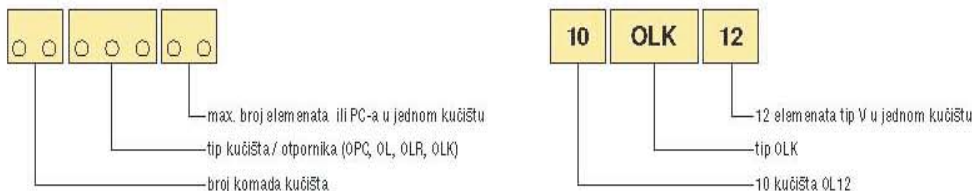
IP13 - Kućište za smještaj na otvorenom prostoru. Zaštitni limeni plašt i krov štite od prskajuće vode (60° prema vertikali).

OZNAČAVANJE OTPORNIKA

Dimenzije standardnih otpornika prikazane su mjernim skicama (str. 10 i 11).

Na zahtjev izradujemo otpornike prema zadanim dimenzijama.

Otpornike možemo izraditi s odvojenim kućištima (vidi str. 12) što je potrebno navesti prilikom narudžbe.



DESIGN

Resistors are manufactured in two main designs:

- Resistor is made of the resistant wire wound on the porcelain cylinders (page 8).
Wound cylinders (PC) arranged on the frames are placed in standard enclosures (OPC).
- Resistor sets (page 6 and 7) consists of resistance elements (table 1) made of expanded corrosion-proof sheet-steel plates. The elements have been spot-welded in order to eliminate the transitive resistance between elements. The resistant sets are arranged in standard enclosures OL, OLR and OLK.

RATED INSULATION VOLTAGE

Resistors with sheet-steel elements	1000 V AC / 1200 V DC
Wire wound resistors	500 V AC / 600 V DC

On special request we can make resistors of higher voltages.

ENCLOSURE

Mechanical protection degree of standard enclosures (in compliance with standard IEC60629):

IP10 - Enclosure for indoor arrangement of resistor. Protective cover of expanded thin metal plate ensures proper cooling with natural air circulation.

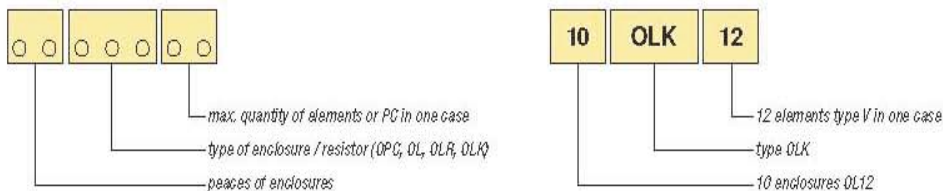
IP13 - Enclosure for outdoor installation. Protective metal cover and roof for protection against spraying water falling at an angle up to 60° from the vertical.

RESISTORS MARKING

For standard enclosures see outline drawings (page 10 & 11)

On request we can make resistors with special dimensions.

Resistors can be made in sections (see page 12) and that must be note in order.



**OTPORNI LIMENI ELEMENTI - OSNOVNI PODACI
RESISTANCE ELEMENTS - BASIC DATA**

V/M

**OTPORNI ELEMENT
RESISTOR ELEMENT** **V**

Otporni limeni elementi izrađeni su od antikoroziivnog istegnutog čeličnog lima.
Resistance elements are made of non-corrodible sheet-steel.

Materijal: x 10 CrNiTi 18.9
Alloy:

Norma: DIN 17440
Standard:

Specifični otpor: 73 μ Ncm
Resistivity:

Temperaturni koeficijent: 0,001
Temperature coefficient:



**TABLICA 1 DOZVOLJENO STRUJNO OPTEREĆENJE (A)
TABLE 1 CURRENT RATINGS (A)**

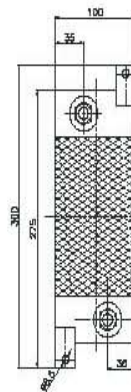
Strujno opterećenje elemenata koji se ugrađuju u kućište OL / OLR / OLK
Current ratings for elements which are built in the enclosures OL / OLR / OLK

ELEMENT TIP	R (N) $\pm 10\%$	INTERMITENCIJA / INTERMITTY (%)				
		trajno cont.	60	40	25	15
V - 1mm						
V1	0,010	285	351	420	510	635
V1.6	0,016	225	292	345	420	525
V2.8	0,028	165	204	252	310	387
V3.7	0,037	142	177	213	262	335
V5.2	0,052	124	151	182	225	285
V7	0,070	112	128	150	185	238
V10	0,100	90	111	135	170	205
M - 1 mm						
M1	0,010	102	123	155	172	215
M1.6	0,016	86	110	123	148	190
M2.8	0,028	67	80	96	117	145
M3.7	0,037	52	62	73	90	115
M5.2	0,052	48	60	69	84	106
M7	0,070	40	48	57	69	85
M10	0,100	35	40	46	57	71

Elementi za kratkotrajna opterećenja!
Elements for short-time current ratings!

V - 1.5 mm		
V2.8	0,028	detalji na upit! details on request!
V5.2	0,052	
V19	0,190	
M - 1.5 mm		
M10	0,100	detalji na upit! details on request!
M14	0,140	
M19	0,190	

**OTPORNI ELEMENT
RESISTOR ELEMENT** **M**

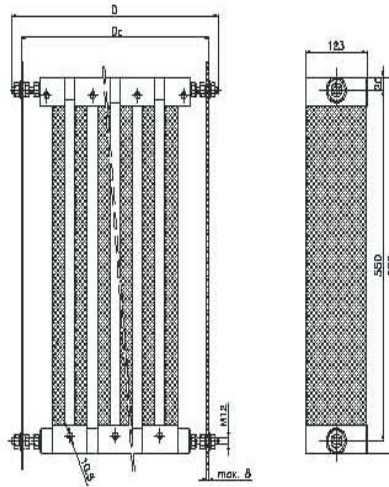


OSV/OSM



MJERNA SKICA
OUTLINE DRAWING

OSV



TABLICA 2 OTPORNI SLOGOVI OSV - OSNOVNE DIMENZIJE
TABLE 2 RESISTOR SETS OSV - BASIC DIMENSIONS

TIP TYPE V	V ELEMENT	D _K	D	MASA MASS
1 mm	kom. / pcs	mm	mm	kg
OSV 01	1	-	-	-
OSV 02	2	220	260	3,6
OSV 03	3	265	305	5,0
OSV 04	4	310	350	6,4
OSV 05	5	355	395	7,8
OSV 06	6	400	440	9,3
OSV 07	7	445	485	10,7
OSV 08	8	490	530	12,1
OSV 09	9	535	575	13,5
OSV 10	10	580	620	15,0
OSV 11	11	625	665	16,4
OSV 12	12	670	710	17,8
OSV 13	13	715	755	19,2
OSV 14	14	760	800	20,6
OSV 15	15	805	845	22,0
OSV 16	16	850	890	23,4
OSV 17	17	895	935	24,8
OSV 18	18	940	980	26,2
OSV 19	19	985	1025	27,7
OSV 20	20	1030	1070	29,1
OSV 21	21	1075	1115	30,5
OSV 22	22	1120	1160	31,9
OSV 23	23	1165	1205	33,3
OSV 24	24	1210	1250	34,7
OSV 25	25	1255	1295	36,1

TIP TYPE V	V ELEMENT	D _K	D	MASA MASS
1.5 mm	kom. / pcs.	mm	mm	kg
OSV 01	1	-	-	-
OSV 02	2	220	260	4,7
OSV 03	3	265	305	6,6
OSV 04	4	310	350	8,5
OSV 05	5	355	395	10,4
OSV 06	6	400	440	12,4
OSV 07	7	445	485	14,3
OSV 08	8	490	530	16,2
OSV 09	9	535	575	18,2
OSV 10	10	580	620	20,1
OSV 11	11	625	665	22,0
OSV 12	12	670	710	23,9
OSV 13	13	715	755	25,9
OSV 14	14	760	800	27,8
OSV 15	15	805	845	29,7
OSV 16	16	850	890	31,6
OSV 17	17	895	935	33,6
OSV 18	18	940	980	35,5
OSV 19	19	985	1025	37,4
OSV 20	20	1030	1070	39,3
OSV 21	21	1075	1115	41,3
OSV 22	22	1120	1160	43,2
OSV 23	23	1165	1205	45,1
OSV 24	24	1210	1250	47,0
OSV 25	25	1255	1295	49,0



**NARUĐBENI PODACI
ORDERING DATA**

OSX YY

- X** - OSV - Otporni slog sastavljen od elemenata tip V
- OSM - Otporni slog sastavljen od elemenata tip M
- YY** - Broj elemenata u slogu

- Standardno:**
- dimenzije sloga vidi u tablicama br. 2 i 3
 - dvije priključne stezaljke (na početku i na kraju sloga)
 - isti tip elemenata u jednom slogu

- Na zahtjev - spec. izvedbe:**
- dužina svornika
 - shema sloga / tip elemenata
 - priključne stezaljke (količina, mjesto, oznaka)

OSX YY

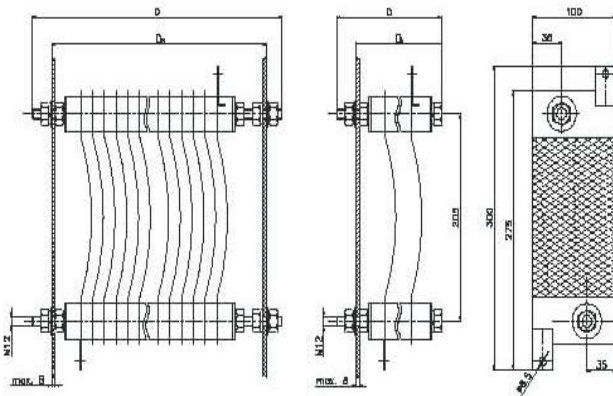
- X** - OSV - Resistor set with elements type V
- OSM - Resistor set with elements type M
- YY** - Quantity of elements in set

- Standard:**
- dimension of set see in tables no. 2 & 3
 - two terminals (in the beginning and in the end of set)
 - same type of elements in one set

- On request - spec. options:**
- rod length
 - scheme of set / type of elements
 - terminals (quantity, position, marking)

**MJERNA SKICA
OUTLINE DRAWING**

OSM



**TABLICA 3 OTPORNI SLOGOVI OSM - OSNOVNE DIMENZIJE
TABLE 3 RESISTOR SETS OSM - BASIC DIMENSIONS**

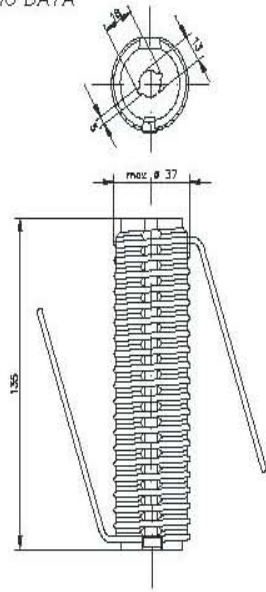
TIP M TYPE M	ELEMENT	D _k	D	MASA MASS
1 mm	kom. / pcs.	mm	mm	kg
OSM 01	1	75	95	0,70
OSM 02	2	90	110	0,95
OSM 03	3	105	125	1,20
OSM 04	4	160	200	1,60
OSM 05	5	175	215	1,80
OSM 06	6	190	230	2,05
OSM 07	7	205	245	2,30
OSM 08	8	220	260	2,55
OSM 09	9	235	275	2,80
OSM 10	10	250	290	3,00
OSM 11	11	265	305	3,25
OSM 12	12	280	320	3,50
OSM 13	13	295	335	3,70
OSM 14	14	310	350	3,95
OSM 15	15	325	365	4,20
OSM 16	16	340	380	4,40
OSM 17	17	355	395	4,65
OSM 18	18	370	410	4,90
OSM 19	19	385	425	5,15
OSM 20	20	400	440	5,35
OSM 21	21	415	455	5,60
OSM 22	22	430	470	5,80
OSM 23	23	445	485	6,05
OSM 24	24	460	500	6,30
OSM 25	25	475	515	6,50

TIP M TYPE M	ELEMENT	D _k	D	MASA MASS
1 mm	kom. / pcs.	mm	mm	kg
OSM 26	26	490	530	6,75
OSM 27	27	505	545	7,00
OSM 28	28	520	560	7,25
OSM 29	29	535	575	7,45
OSM 30	30	550	590	7,70
OSM 31	31	565	605	7,90
OSM 32	32	580	620	8,15
OSM 33	33	595	635	8,40
OSM 34	34	610	650	8,60
OSM 35	35	625	665	8,85
OSM 36	36	640	680	9,10
OSM 37	37	655	695	9,30
OSM 38	38	670	710	9,55
OSM 39	39	685	725	9,80
OSM 40	40	700	740	10,00
OSM 41	41	715	755	10,25
OSM 42	42	730	770	10,50
OSM 43	43	745	785	10,70
OSM 44	44	760	800	10,95
OSM 45	45	775	815	11,20
OSM 46	46	790	830	11,40
OSM 47	47	805	845	11,65
OSM 48	48	820	860	11,90
OSM 49	49	835	875	12,10
OSM 50	50	850	890	12,35



ŽIČANI OTPORNICI WIRE WOUND RESISTORS

OSNOVNI PODACI
BASIC DATA



Žičani otpornici PC:
Otporna žica namotana na porculanske cilindre
Wire wound resistors PC:
Resistance wire wound on the porcelain cylinders

Žica: CuNi 44 (konstantan)

Wire:

Norma: DIN 17471

Reference:

Specifični otpor: 48 $\mu\Omega/\text{cm}$

Resistivity:

Temperaturni koeficijent: zanemariv

Temperature coefficient: negligible



TABLICA 4 DOZVOLJENO STRUJNO OPTEREĆENJE
TABLE 4 CURRENT RATINGS

PC TIP	ŽICA PROMJER	OTPOR	DOPUŠTENA TRAJNA STRUJA	OZNAKA ZA NARUDŽBU
PC TYPE	WIRE DIAMETER	RESISTANCE	CURRENT CONTINUOUS RATING	ORDERING CODE
	mm	$\Omega(\pm 10\%)$	A	
24	2,80	0,20	26,50	A 0 1
	2,50	0,24	23,50	A 0 2
	2,20	0,31	20,00	A 0 3
	2,00	0,37	18,50	A 0 4
	1,80	0,46	16,50	A 0 5
	1,60	0,57	15,00	A 0 6
	1,40	0,74	13,00	A 0 7
30	2,80	0,25	24,00	B 0 1
	2,50	0,30	21,00	B 0 2
	2,20	0,41	18,00	B 0 3
	2,00	0,49	16,20	B 0 4
	1,80	0,60	14,70	B 0 5
	1,60	0,76	13,10	B 0 6
	1,40	0,97	11,50	B 0 7
41	2,80	0,31	21,00	C 0 1
	2,50	0,37	18,00	C 0 2
	2,20	0,49	16,20	C 0 3
	2,00	0,58	15,00	C 0 4
	1,80	0,70	13,50	C 0 5
	1,60	0,87	12,00	C 0 6
	1,40	1,10	10,00	C 0 7
60	2,80	0,37	18,00	D 0 1
	2,50	0,44	16,00	D 0 2
	2,20	0,58	15,00	D 0 3
	2,00	0,69	14,00	D 0 4
	1,80	0,83	12,50	D 0 5
	1,60	1,00	11,00	D 0 6
	1,40	1,25	9,00	D 0 7
82	2,80	0,44	16,00	E 0 1
	2,50	0,52	14,00	E 0 2
	2,20	0,69	14,00	E 0 3
	2,00	0,83	12,50	E 0 4
	1,80	1,00	11,00	E 0 5
	1,60	1,25	9,00	E 0 6
	1,40	1,60	8,00	E 0 7
118	2,80	0,52	14,00	F 0 1
	2,50	0,62	12,50	F 0 2
	2,20	0,83	12,50	F 0 3
	2,00	1,00	11,00	F 0 4
	1,80	1,25	9,00	F 0 5
	1,60	1,60	8,00	F 0 6
	1,40	2,00	7,00	F 0 7

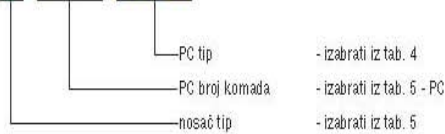


ŽIČANI OTPORNICI NA NOSAČIMA
WIRE-WOUND RESISTORS ON CONSOLES



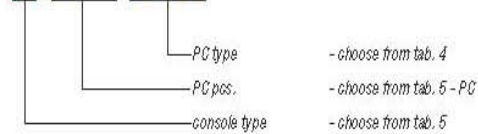
OZNAČAVANJE

L1.01PC-□□□

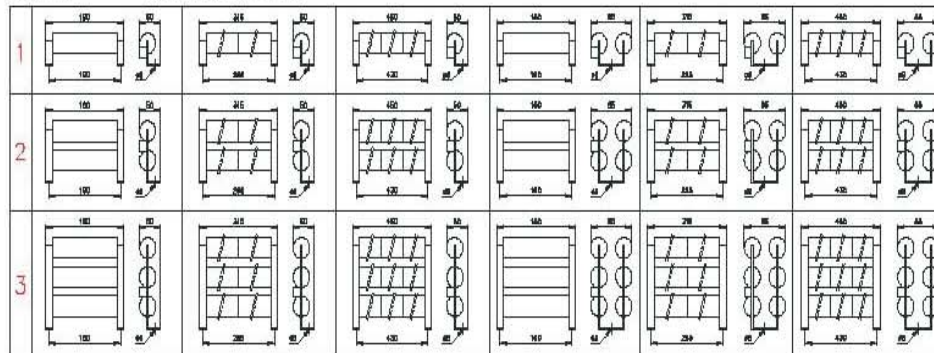


MARKING

L1.01PC-□□□



TABLICA 5 MJERNE SKICE
TABLE 5 OUTLINE DRAWINGS



PC	TIP / TYPE	L	kg	TIP / TYPE	M	kg	TIP / TYPE	N	kg	TIP / TYPE	U	kg	TIP / TYPE	V	kg	TIP / TYPE	Z	kg
01	L1.01PC-□□□		0,5															
02	L2.02PC-□□□		0,9	M1.02PC-□□□		0,8				U1.02PC-□□□		1,0						
03	L3.03PC-□□□		1,3	M2.03PC-□□□		1,2	N1.03PC-□□□		1,1	U2.03PC-□□□		1,5	V1.03PC-□□□		1,3			
04				M2.04PC-□□□		1,5	N2.04PC-□□□		1,5	U2.04PC-□□□		1,8	V1.04PC-□□□		1,8			
05				M3.05PC-□□□		1,9	N2.05PC-□□□		1,8	U3.05PC-□□□		2,4	V2.05PC-□□□		2,1	Z1.05PC-□□□		1,9
06				M3.06PC-□□□		2,2	N2.06PC-□□□		2,1	U3.06PC-□□□		2,7	V2.06PC-□□□		2,4	Z1.06PC-□□□		2,2
07							N3.07PC-□□□		2,5				V2.07PC-□□□		2,7	Z2.07PC-□□□		2,7
08							N3.08PC-□□□		2,8				V2.08PC-□□□		3,0	Z2.08PC-□□□		3,0
09							N3.09PC-□□□		3,1				V3.09PC-□□□		3,6	Z2.09PC-□□□		3,3
10													V3.10PC-□□□		3,9	Z2.10PC-□□□		3,5
11													V3.11PC-□□□		4,2	Z2.11PC-□□□		3,9
12													V3.12PC-□□□		4,5	Z2.12PC-□□□		4,2
13																Z3.13PC-□□□		4,8
14																Z3.14PC-□□□		5,1
15																Z3.15PC-□□□		5,4
16																Z3.16PC-□□□		5,7
17																Z3.17PC-□□□		6,0
18																Z3.18PC-□□□		6,3

Ovaj crtez e sposobnost na Elektrolux-Rizla-Bez. negovo piserno oobavunje istoi nesree da se precisno umozuova niil kopira bez soglasnost od **Elektroluks** vo sprotno se snosot poseđeci vo smislana clerovitel 163 i 164 od klicniot zakon R.M. (povreda na avtorsko pravo

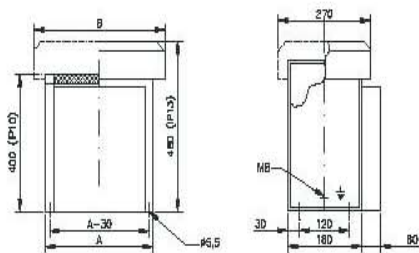


Elektroluks is registered trademark of Elektroluks companies in Macedonia and other countries

**MJERNE SKICE
OUTLINE DRAWINGS**

OTPORNICI
RESISTORS

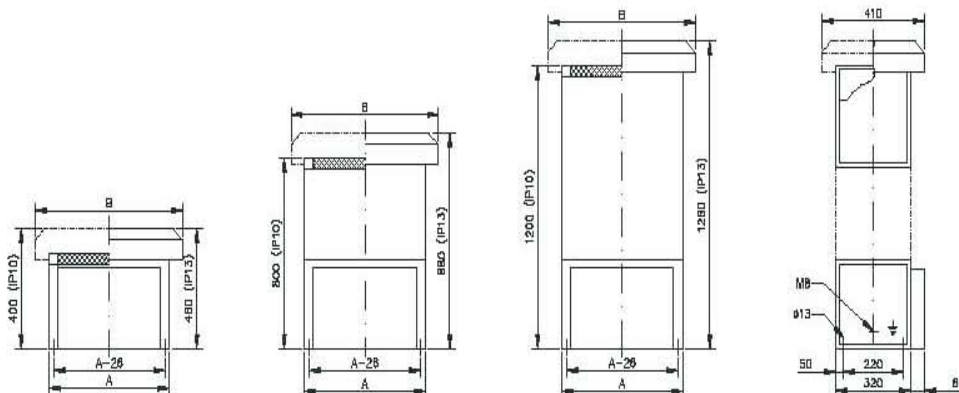
OPC 6 / OPC 12



TABLICA 6 TABLE 6			MASA MASS		ŠTEZALJKE TERMINALS		
	A	B	IP10	IP13	6 mm ²	16 mm ²	M8
TIP TYPE	mm		max. kg		max. kom. / max. pos.		
OPC 6	215	385	8	10	4		
OPC 12	350	500	11	13	10		
OPC 24			18	21		10	
OPC 36			22	25		16	
2 OPC 36			44	47		32	
3 OPC 36			66	71		32	
OL 46	500	640	25	28			10
2 OL 46			50	53			20
3 OL 46			75	80			20
OPC 48			26	30		20	
2 OPC 48			52	56		40	
3 OPC 48			78	84		40	
OL 62	623	765	30	34			13
2 OL 62			60	64			26
3 OL 62			90	96			26
OPC 60			30	35		23	
2 OPC 60			60	65		46	
3 OPC 60			90	97		46	
OL 74	721	875	34	39			15
2 OL 74			68	73			30
3 OL 74			102	109			30
OPC 72			35	43		28	
2 OPC 72			70	78		56	
3 OPC 72			105	115		56	
OL 92	848	990	40	48			18
2 OL 92			80	88			36
3 OL 92			120	130			36

OTPORNICI
RESISTORS

OPC 24 - 3 OPC 72 / OL 46 - 3 OL 92



Ovoj crtez e sposobnost na Elektroluks-Bez. negovo pisarno odobruvanje istoi nesmee da se precisira, umnozava ni li kopira bez soglasnost od Elektroluks vo sprotno se snoset posledici vo smislana clerovite 163 i 164 od klicniot zakon R.M. (povreda na avtorsko pravo)

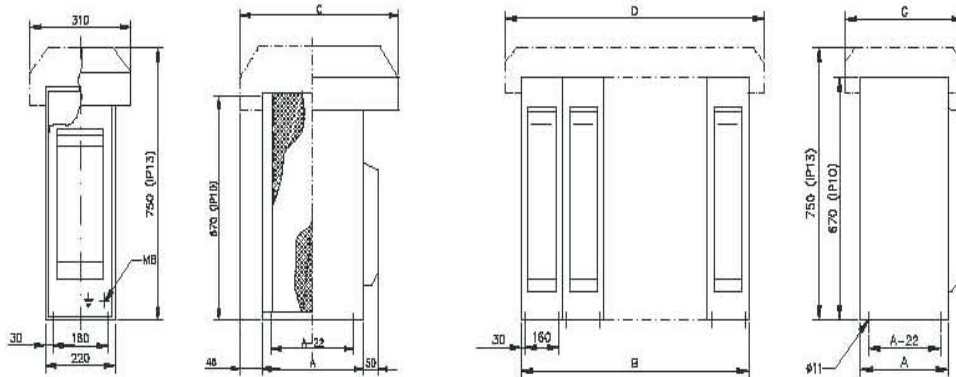


OTPORNICI
RESISTORS

OL 6 - OL 12

OTPORNICI
RESISTORS

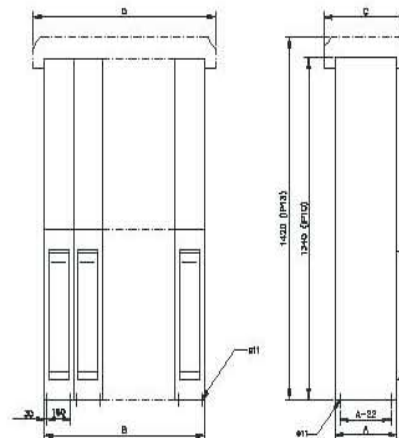
2 OLR 6 - 6 OLR 12



TABLICA 7 TABLE 7					MASA MASS		STEZALJKE TERMINALS
TIPI TYPE	A	B	C	D	IP10	IP13	M12
	mm				max. kg		max. kom. max. pcs.
OL 6	445		612		20	24	
OL 9	580	220	747	320	26	30	12
OL 12	715		882		32	36	
U REDU / IN LINE							
2 OLR 6	445		545		40	48	
2 OLR 9	580	440	680	540	52	60	24
2 OLR 12	715		815		64	72	
3 OLR 6	445		545		60	72	
3 OLR 9	580	660	680	760	78	88	24
3 OLR 12	715		815		94	106	
4 OLR 6	445		545		80	96	
4 OLR 9	580	880	680	980	104	115	24
4 OLR 12	715		815		128	140	
5 OLR 6	445		545		100	120	
5 OLR 9	580	1100	680	1200	130	154	24
5 OLR 12	715		815		160	186	
6 OLR 6	445		545		120	144	
6 OLR 9	580	1320	680	1420	156	188	36
6 OLR 12	715		815		192	216	
NA KAT / TWO STORED							
4 OLK 6	445		545		80	88	
4 OLK 9	580	440	680	540	104	112	24
4 OLK 12	715		815		128	136	
6 OLK 6	445		545		120	132	
6 OLK 9	580	660	680	760	156	166	24
6 OLK 12	715		815		192	202	
8 OLK 6	445		545		160	192	
8 OLK 9	580	880	680	980	208	240	24
8 OLK 12	715		815		256	288	
10 OLK 6	445		545		200	240	
10 OLK 9	580	1100	680	1200	260	300	24
10 OLK 12	715		815		320	360	
12 OLK 6	445		545		240	288	
12 OLK 9	580	1320	680	1420	312	360	36
12 OLK 12	715		815		384	432	

OTPORNICI
RESISTORS

4 OLK 6 - 12 OLK 12



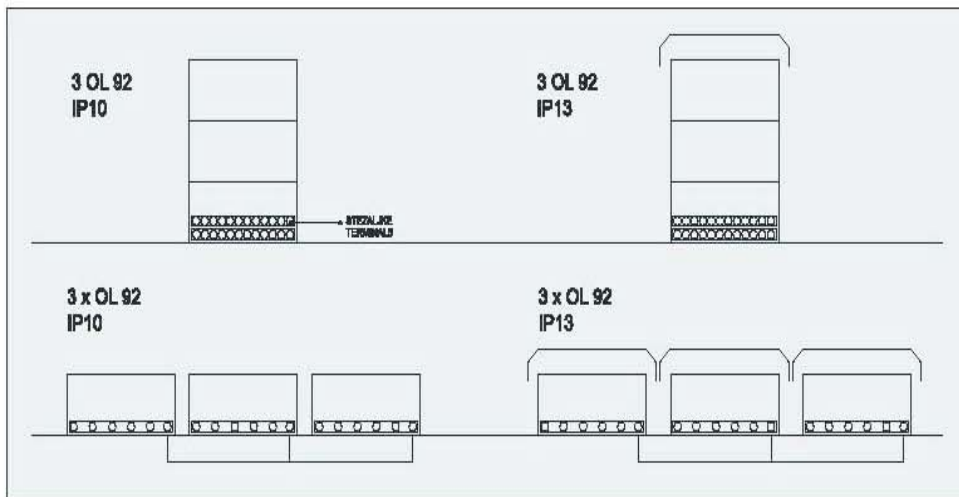
**VAŽNO!
IMPORTANT!**



U SLUČAJU DA JE OTPORNIK SASTAVLJEN OD VIŠE KUĆIŠTA (OL ILI OPC) MOGUĆE SU DVIJE IZVEDBE:
 - ZAJEDNO SPOJENA KUĆIŠTA (npr. 3 OL 92)
 - ODVOJENA KUĆIŠTA (npr. 3 x OL 92)



IN THE CASE THAT ONE RESISTOR IS COMPLETED FROM FEW BOXES (OL OR OPC) TWO VERSIONS OF MOUNTING ARE POSSIBLE:
 - BOXES MOUNTED TOGETHER (for example: 3 OL 92)
 - SEPARATELY BOXES (for example: 3 x OL 92)



VAŽNO!

U SLUČAJU ZAMJENE STAROG OTPORNIKA PROIZVODNJE **KONČAR** NOVIM, DOVOLJNO JE PRILIKOM NARUĐBE NAVESTI PODATAK Rp. OTISNUT NA NATPISNOJ PLOČICI OTPORNIKA.

KONČAR			
Tip			
Rp	Br.		
u	V	i	A
P	kW	R	Ω
IP	ED	%	
Made in Croatia			



IMPORTANT!

IN THE CASE OF SUBSTITUTION THE OLD RESISTOR WITH NEW ONE PRODUCED BY **KONČAR** YOU CAN ONLY STATE THE NUMBER Rp. MARKED ON THE RESISTORS NAMEPLATE WHEN ORDERING.

KONČAR			
Type			
Rp	No.		
u	V	i	A
P	kW	R	Ω
IP	ED	%	
Made in Croatia			



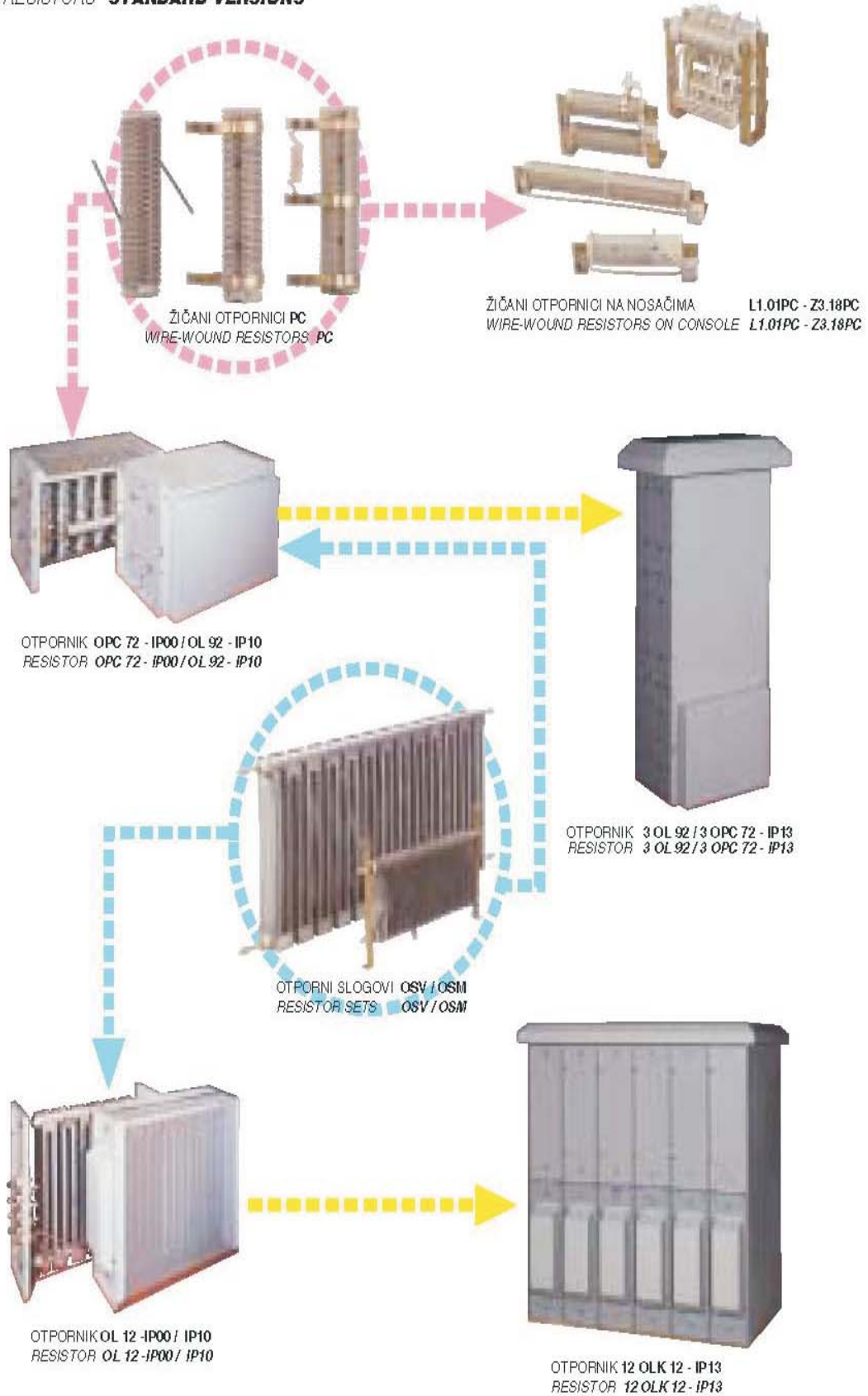
ZA SVE NEJASNOĆE U VEZI TEHNIČKIH PODATAKA SLOBODNO SE JAVITE NAŠEM TEHNIČKOM UREDU.



IN THE CASE OF ANY DOUBTS CONCERNING THE TECHNICAL DETAILS PLEASE DO NOT HESITATE TO CONTACT OUR TECHNICAL DEPARTMENT.



**OTPORNICI
RESISTORS** **STANDARDNE IZVEDBE
STANDARD VERSIONS**



PRIMJERI
EXAMPLES

OTPORNICI **SPECIJALNE IZVEDBE**
RESISTORS **SPECIAL VERSIONS**



OTPORNICI ZA UZEMLJENJE ZVJEZDIŠTA GENERATORA **OUG**
GENERATORS NEUTRAL EARTHING RESISTORS **OUG**



OTPORNICI ZA UZEMLJENJE ZVJEZDIŠTA TRANSFORMATORA **OUN**
TRANSFORMERS NEUTRAL EARTHING RESISTORS **OUN**



OTPORNI ELEMENTI NA NOSAČIMA **IP00**
RESISTOR ELEMENTS ON CONSOLE **IP00**



ŽIČANI OTPORNICI **PC**
WIRE-WOUND RESISTORS **PC**



OTPORNICI ZA PRAŽNENJE AKU-BATERIJA **OR**
RESISTORS FOR BATTERY DISCHARGE **OR**



ŽIČANI OTPORNICI **SPEC.**
WIRE-WOUND RESISTORS **SPEC.**



OTPORNI SPECIJALNE IZVEDBE
RESISTORS SPECIAL VERSIONS



ULNIBOTORSKI POKRETAČ SPEC
ACTOR OF CONTROLLER SW



ULNIBOTORSKI POKRETAČ PUNO PUNIM
ACTOR OF CONTROLLER FULL PWR

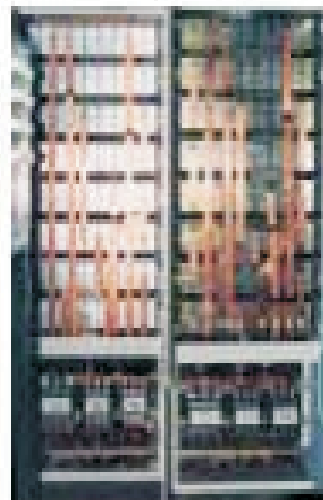
OTPORNI RIZIKOM OLVOM
RESISTORS OF RISK



ULNIBOTORSKI POKRETAČ PUNIM PUNIM
ACTOR OF CONTROLLER FULL PWR



OTPORNI S PRAKTIČNOM VENTILACIJOM I
RESISTORS WITH PRACTICAL VENTILATION



IZOLIRANI ROTORSKI POKRETAČ I
OTPORNI RIZIKOM I RIZIKOM
ACTOR OF CONTROLLER WITH
RESISTORS RISK AND CONTROLLER

Ovo je crtež i sponstenost na ElectroLux-Firma.Bez. njegovo pismeno odobruvanje istoi nesmee da se prepisuje, umnozava niti kopira bez saglasnost od ElektroLUK. U skladu sa zakonom R.M. (povreda na autorsko pravo)

Elektroluks is registered trademark of ElektroLUX companies in Macedonia and other countries

