



Air Conditioner 2008 Collection

Galanz

Golden Comercial A/C Model Line Up

BTU		18000BTU	24000BTU	30000BTU	
Duct type	L ESP---- Blow Through				
	R22 / 50Hz R407C / 50Hz				
	M ESP---Draw Through				
	R22 / 50Hz				
	R407C / 50Hz				
	R410A / 50Hz				
	H ESP---Draw Through (Soft Start Available)				
	R22 / 50Hz				
Cassette Type	R22 / 50Hz-60Hz R410A/50Hz				
Floor Ceiling Type	R22 / 50Hz				
	R410A / 50Hz				
f ³ /m		200 f ³ /m	300 f ³ /m	400 f ³ /m	500 f ³ /m
Fan coil	ESP/0---30Pa				
	ESP/50---70Pa				
f ³ /m		1000 f ³ /m	1500 f ³ /m	2000 f ³ /m	2500 f ³ /m
Ceiling air handling	4-row				
	6-row				
Commercial dual	DC inverter dual				
	Fixed speed dual				



36000BTU	42000BTU	48000BTU	60000BTU
----------	----------	----------	----------



7



9



10



11



12



13



15



16

600 f ³ /m	700 f ³ /m	800 f ³ /m	1000 f ³ /m	1200 f ³ /m	1400 f ³ /m
-----------------------	-----------------------	-----------------------	------------------------	------------------------	------------------------



17



18

3000 f ³ /m	3500 f ³ /m	4000 f ³ /m	4500 f ³ /m	5000 f ³ /m	6000 f ³ /m
------------------------	------------------------	------------------------	------------------------	------------------------	------------------------



19



20

21

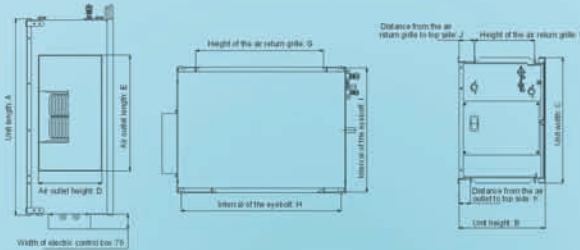
23



R407c /50Hz



GD-18H(C)C
GD-24H(C)C
GD-36H(C)CS
GD-48H(C)CS



Technical specifications

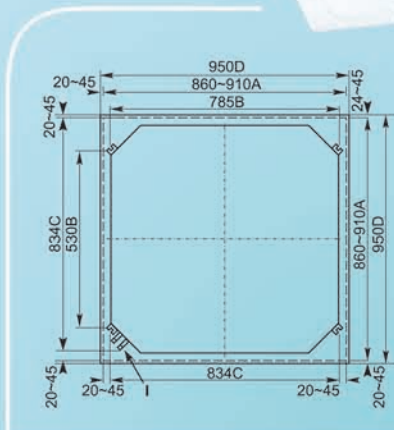
Model		GD-18H(C)C	GD-24H(C)C	GD-36H(C)C	GD-48H(C)CS
Performance					
BTU		18000	24000	36000	48000
Capacity (W)	Cooling	5600	7600	10500	14000
	Heating	6000	8100	12500	14800
Power input (W)	Cooling	2000	2700	4030	5300
	Heating	2000	2700	4160	5200
EER/COP (w/w)	COOL/HEAT	2.8/3.0	2.81/3.0	2.61/3.0	2.50/2.71
Energy class	Cool	C	C	D	E
Power supply	V/PHz	220-240V/1/50Hz	220-240V/1/50Hz	220-240V/1/50Hz	380V/3/50HZ
Running current	Cooling A	9.5	13	17.2	10
	Heating A	9.5	13	17.5	10.2
Refrigerant type		R407c			
Indoor Unit					
Air flow volume	m ³ /H	700	1360	1700	2300
Moisture removal	Liters/H	2.3	2.6	3.2	4.1
Noise level	Db	37	41	43	48
Dimension	W*H*D(mm)	726*248*555	925*275*660	925*275*660	1250*310*750
Weight	kg	31	42	44	59
Controls		Wireless remote control as standard, wired controls as option			
Outdoor unit					
Noise level	Db	54	55	56	85
Dimension	W*H*D(mm)	860*690*370	805*420*935	1030*413*955	1030*413*955
Weight	kg	50	70	85	85
Tube diameter Narrow/wide	Inch	1/4, 1/2	3/8, 5/8	3/8, 3/4	3/8, 3/4
Rating conditions		Cooling: Indoor air temperature 27° C DB/19° C WB; Outdoor air temperature 35° C DB/24° C WB Heating: Indoor air temperature 20° C DB; Outdoor air temperature 7° C DB/6° C WB The technical data here indicated are in compliance with the European standard PREN14511			

Remark: The above designs and specifications might be changed without prior notice for product improvement.

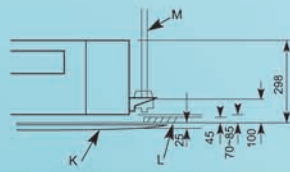
Four Way Cassette

R22 /50Hz

GC-18H(C)F
GC-24H(C)F
GC-24EF
GC-36H(C)F
GC-42H(C)F
GC-42EFS



- A. Ceiling opening size
- B. Distance of eyebolt
- C. Size of outer edge of the unit
- D. Size of outer edge of the panel
- I. Pipeline connection
- K. Panel
- L. Ceiling inlaid board
- M. Eyebolt



Technical specifications

Model		GC-18H(C)F	GC-24H(C)F	GC-24EF	GC-36H(C)FS	GC-42H(C)FS	GC-42EFS
Performance							
BTU		18000	24000	24000	36000	42000	42000
Capacity (W)	Cooling	5200	7000	7000	10500	12000	18000
	Heating	5700	7800	7800+7000	12500	13500	20000
Power input (W)	Cooling	2050	2800	2800	4040	4800	7200
	Heating	2000	2850	2850+2000	3960	5000	7700
Power supply	Electric	/	/	2000	/	/	/
	V/PH/Hz	220-240V/1/50Hz	220-240V/1/50Hz	220-240V/1/50Hz	380V/3/50Hz	380V/3/50Hz	380V/3/50Hz
Running current	Cooling A	9.5	13.3	13.3	7.4	8.5	12.5
	Heating A	9.3	13.5	13.5+8.7	7.3	8.9	13.5
Refrigerant type		R22					
Indoor Unit							
Air flow volume	m ³ /H	850	1210	1210	1680	1680	3050
Moisture removal	Liters/H	2	2.4	2.4	3.6	4.5	4.8
Noise level	DbA	47	48	48	51	51	52
Unit dimension	W*H*D(mm)	570*570*255	840*840*245	840*840*245	840*840*245	840*840*245	840*840*245
Panel dimension	W*H*D(mm)	650*650*30	950*950*50	950*950*50	950*950*50	950*950*50	950*950*50
Weight	kg	32	43	43	48	48	48
Controls		Wireless remote control as standard, wired controls as option					
Outdoor unit							
Noise level	DbA	53	56	56	61	62	62
Dimension	W*H*D(mm)	860*370*690	805*420*935	805*420*935	1030*413*955	1030*413*955	1030*413*955
Weight	kg	50	70	85	85	85	85
Tube diameter Narrow/wide	Inch	1/4"/1/2"	3/8"/5/8"	3/8"/5/8"	3/8"/3/4"	3/8"/3/4"	3/8"/3/4"
Rating conditions		Cooling: Indoor air temperature 27° C DB/19° C WB; Outdoor air temperature 35° C DB/24° C WB Heating: Indoor air temperature 20° C DB; Outdoor air temperature 7° C DB/6° C WB					

Remark: The above designs and specifications might be changed without prior notice for product improvement.

Galaxy

R22 220-240V/50Hz

Total Star



AUS09H53F150L2
 AUS12H53F150L2
 AUS18H53F150L2
 AUS24H53F150L2



Standard:



Technical specifications

Model	AUS09H53F150L2	AUS12H53F150L2	AUS18H53F150L2	AUS24H53F150L2
BTU	9000	12000	18000	24000
Function	Cooling/Heating	Cooling/Heating	Cooling/Heating	Cooling/Heating
Power	1Ph/220-240V/50HZ	1Ph/220-240V/50HZ	1Ph/220-240V/50HZ	1Ph/220-240V/50HZ
Capacity (W)	Cooling	2500	3200	4800
	Heating	2700	3500	5800
Rated input (W)	Cooling	930	1250	1980
	Heating	800	1200	1920
Rated current (A)	Cooling	4.4	5.5	8.6
	Heating	4.2	5.5	8.3
Dehumidifying capacity (L/H)	1.2	1.5	2.2	2.3
Air flow volume (m3/H)	400	450	850	1100
Noise dB(A)	Indoor	38	40	46
	Outdoor	50	49	56
Unit dimension WxHxD (mm)	Indoor	800*290*196	800*290*196	860*292*205
	Outdoor	665*500*295	745*552*328	830*530*320
Box dimension WxHxD (mm)	Indoor	870*365*280	870*365*280	930*365*280
	Outdoor	725*580*350	800*635*375	910*630*380
Net weight (Kg)	Indoor	10	10	12
	Outdoor	25	33	41
Gross weight (Kg)	Indoor	11.5	11.5	14
	Outdoor	28	36.5	44.5
Suitable area (m2)	10-21	13-23	20-40	27.3-45.4
Loading qty (20'/40'/40'HQ)	126/266/298	102/220/254	92/196/222	60/128/143

Remark: The above designs and specifications might be changed without prior notice for product improvement.

Flat

R22 220-240V/50Hz

Smart



AUS07H53F010H10
 AUS09H53F010H10
 AUS12H53F010H10
 AUS18H53F010H10
 AUS24H53F010H10



Standard:



Technical specifications

Model	AUS07H53F010H10	AUS09H53F010H10	AUS12H53F010H10	AUS18H53F010H10	AUS24H53F010H10	
BTU	7000	9000	12000	18000	24000	
Function	Cooling/Heating	Cooling/Heating	Cooling/Heating	Cooling/Heating	Cooling/Heating	
Power	1Ph/220-240V/50HZ	1Ph/220-240V/50HZ	1Ph/220-240V/50HZ	1Ph/220-240V/50HZ	1Ph/220-240V/50HZ	
Capacity (W)	Cooling	2000	2500	3200	4800	6500
	Heating	2100	2750	3550	5800	7300
Rated input (W)	Cooling	780	960	1200	1980	2500
	Heating	750	920	1200	1920	2600
Rated current (A)	Cooling	3.5	4.3	5.5	8.6	11.5
	Heating	3.3	4.2	5.5	8.3	12.5
Dehumidifying capacity (L/H)	0.7	1.2	1.5	2.2	2.3	
Air flow volume (m3/H)	350	450	450	850	1100	
Noise dB(A)	Indoor	34	34	34	46	51
	Outdoor	49	49	51	56	60
Unit dimension WxHxD (mm)	Indoor	707*250*202	707*250*202	707*250*202	860*292*205	1080*330*220
	Outdoor	500*665*295	500*665*295	552*745*328	830*530*320	910*690*370
Box dimension WxHxD (mm)	Indoor	780*315*270	780*315*270	780*315*270	930*365*280	1180*425*300
	Outdoor	725*350*580	725*350*580	800*375*635	910*630*380	1010*775*430
Net weight (Kg)	Indoor	8	8.5	8	12	15
	Outdoor	25	25	29	41	60
Gross weight (Kg)	Indoor	9.5	9.5	9.5	14	18.5
	Outdoor	28	28	32.5	44.5	65
Suitable area (m2)	10-21	10-16.7	14-23.3	20-40	27.3-45.4	
Loading qty (20'/40'HQ)	142/295/330	142/295/330	110/236/280	92/196/222	60/128/143	

Classic

R22 220-240V/50Hz



AUS-12HR53FA2
AUS-18H53F120F9
AUS-24H53F230G7



Technical specifications

Model		AUS-12HR53FA2	AUS-18H53F120F9	AUS-24H53F230G7
BTU		12000	18000	24000
Function		Cooling / Heating		
Power		220-240V , 50Hz		
Capacity (W)	cooling	3200	4800	6500
	heating	3550	5500	7200
Rated input (W)	cooling	1200	1980	2500
	heating	1200	1920	2500
Rated current (A)	cooling	5.5	8.6	11.4
	heating	5.5	8.3	11.4
Dehumidifying capacity (L/H)		1.6	2.2	3.0
Air flow volume (m ³ /h)		450	850	1100
Noise dB(A)	indoor	40	46	51
	outdoor	49	56	60
Unit dimension WxHxD (mm)	indoor	800x290x183	1020x315x178	1080x330x220
	outdoor	745x552x328	830x530x320	910x690x370
Net weight (kg)	indoor	10	14.5	15
	outdoor	30	41	60

Classic

407C 220-240V/50Hz



AUS-07H53C010B11
 AUS-09H53C010B11
 AUS-12H53C110B11
 AUS-18H53C120F1
 AUS-24H53C230G2



Standard:



Technical specifications

Model	AUS-07H53C010B11	AUS-09H53C010B11	AUS-12H53C110B11	AUS-18H53C120F1	AUS-24H53C230G2	
BTU	7000	9000	12000	18000	24000	
Function	Cooling/Heating	Cooling/Heating	Cooling/Heating	Cooling/Heating	Cooling/Heating	
Power	220-240V/50HZ	220-240V/50HZ	220-240V/50HZ	220-240V/50HZ	220-240V/50HZ	
Capacity (W)	Cooling	2150	2500	3300	5000	6500
	Heating	2300	2700	3650	5800	7300
Rated input (W)	Cooling	760	930	1260	1910	2730
	Heating	750	890	1250	2060	2800
Rated current (A)	Cooling	3.5	4.3	5.6	8.7	12.4
	Heating	3.5	4.1	5.5	9.4	12.8
Dehumidifying capacity (L/H)	0.61	0.9	1.6	2.4	2.3	
Air flow volume (m3/H)	300	400	450	850	1100	
Noise dB(A)	Indoor	32	40/37/34	40	46	51/48/45
	Outdoor	48	49	51	57	60
Unit dimension WxHxD (mm)	Indoor	800x290x183	800x290x196	800x290x183	1020x315x178	1080x330x220
	Outdoor	665x500x295	665x500x295	830x500x310	830x530x320	910x690x370
Box dimension WxHxD (mm)	Indoor	855x355x255	885x365x285	840x340x240	1090x390x265	1180x425x300
	Outdoor	725x580x350	725x580x350	895x590x355	910x380x630	1010x775x430
Net weight (Kg)	Indoor	10	10	10	14.5	15
	Outdoor	26	26	33	41	59
Gross weight (Kg)	Indoor	11.5	11.5	11.5	17	18.5
	Outdoor	29	29	36.5	44.5	65
Suitable area (m2)	8-17	10-16.7	13-27	20.4-34	27.3-45.4	
Loading qty (20'/40'HQ)	132/276/315	132/276/315	115/240/270	90/186/215	60/128/143	

Remark: The above designs and specifications might be changed without prior notice for product improvement.

DC Inverter



AUS09H53R120
AUS12H53R120
AUS18H53R120
AUS24H53R120



Technical specifications

Model	AUS09H53R120	AUS12H53R120	AUS18H53R120	AUS24H53R120
BTU	9000	12000	18000	24000
Function	Cooling/Heating	Cooling/Heating	Cooling/Heating	Cooling/Heating
Power	220-240V/50Hz	220-240V/50Hz	220-240V/50Hz	220-240V/50Hz
Capacity (W)	Cooling	2500(1200-4000)	3200(1300-4100)	5200(2600-5500)
	Heating	2800(1400-5000)	3600(1500-5100)	5800(2800-7000)
Rated input (W)	Cooling	780(270-1360)	1070(620-1420)	1990(580-2540)
	Heating	830(300-1600)	1150(340-1700)	2100(650-2540)
Rated current (A)	Cooling	3.1(1.3-6.2)	5(1.6-6.8)	9.2(2.7-11.2)
	Heating	3.3(1.4-7.3)	5.2(1.6-7.5)	9.4(2.9-11.2)
Dehumidifying capacity (L/H)	0.8	1.1	2	2.3
Air flow volume (m ³ /H)	550	500	850	1100
Noise dB(A)	Indoor	40	42	46
	Outdoor	50	51	59
Unit dimension WxHxD (mm)	Indoor	800x290x196	800x290x196	800x290x194
	Outdoor	830x530x320	830x530x320	860x690x370
Box dimension WxHxD (mm)	Indoor	885x365x280	885x365x280	845x350x255
	Outdoor	910x620x380	910x620x380	1010x775x430
Net weight (Kg)	Indoor	10	10	10
	Outdoor	30	35	50
Gross weight (Kg)	Indoor	11.5	12.5	11.5
	Outdoor	32	37	55
Suitable area (m ²)	10-21	13-27	20-34	26-57
Loading qty (20'/40'/140'HQ)	96/197/225	96/197/225	70/144/162	44/92/117

Remark: The above designs and specifications might be changed without prior notice for product improvement.

Portable

407C 220-240V/50Hz



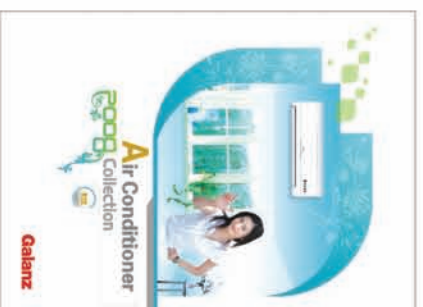
Standard:



Technical specifications

Model	AM-07C53CD1	AM-07E53CD1	AM-09C53CD1(b)	AM-09E53CD1(b)	AM-09C53CA1(b)	AM-09E53CA1(b)	AM-12C53CA1(a)	AM-12E53CA1(a)
BTU	7000	7000	9000	9000	9000	9000	12000	12000
Function	Cooling	Cooling/Electrical Heating	Cooling	Cooling/Electrical Heating	Cooling	Cooling/Electrical Heating	Cooling	Cooling/Electrical Heating
Power	220-240V/50Hz	220-240V/50Hz	220-240V/50Hz	220-240V/50Hz	220-240V/50Hz	220-240V/50Hz	220-240V/50Hz	220-240V/50Hz
Capacity (W)	Cooling	2000	2000	2500	2500	2500	3200	3200
	Heating	\	1400	\	1400	\	1500	1500
Rated input (W)	Cooling	830	830	950	950	980	980	1280
	Heating	\	1500	\	1500	\	1600	1600
Rated current (A)	Cooling	3.6	3.6	4.1	4.1	4.4	4.4	5.7
	Heating	\	6.5	\	6.5	\	7.1	8.1
Dehumidifying capacity (L/H)	1	1	1.2	1.2	2	2	2.6	2.6
Air flow volume (m ³ /H)	340	340	340	340	400	400	450	450
Noise dB(A)	Indoor	53	53	53	53	55	55	56
	Outdoor	\	\	\	\	\	\	\
Unit dimension WxHxD (mm)	Indoor	480x645x480	480x645x480	480x645x480	480x645x480	388x770x605	388x770x605	388x770x605
	Outdoor	\	\	\	\	\	\	\
Box dimension WxHxD (mm)	Indoor	650x510x670	650x510x670	650x510x670	650x510x670	730x430x830	730x430x830	730x430x830
	Outdoor	\	\	\	\	\	\	\
Net weight (Kg)	Indoor	34	34.5	34	34.5	35.5	36.5	40
	Outdoor	\	\	\	\	\	\	\
Gross weight (Kg)	Indoor	38.5	39	38.5	39	40	41	44.5
	Outdoor	\	\	\	\	\	\	\
Suitable area (m ²)	9-15	9-15	11-17	11-17	11-17	11-17	15-22	15-22
Loading qty (20'/40'/40'HQ)	120/246/328	120/246/328	120/246/328	120/246/328	84/174/261	84/174/261	84/174/261	84/174/261

Remark: The above designs and specifications might be changed without prior notice for product improvement.



Galanz



ISO9001

EKSKLUZIVNI UVOZNIK, DISTRIBUTER I CENTRALNI SERVIS



Autoput za Novi Sad 71
Tel. 011.3757 555 • 3757 107 • 3757 329; Fax: 011.3757 433
www.steelsoft.co.yu • ssoftlg@hotmail.com