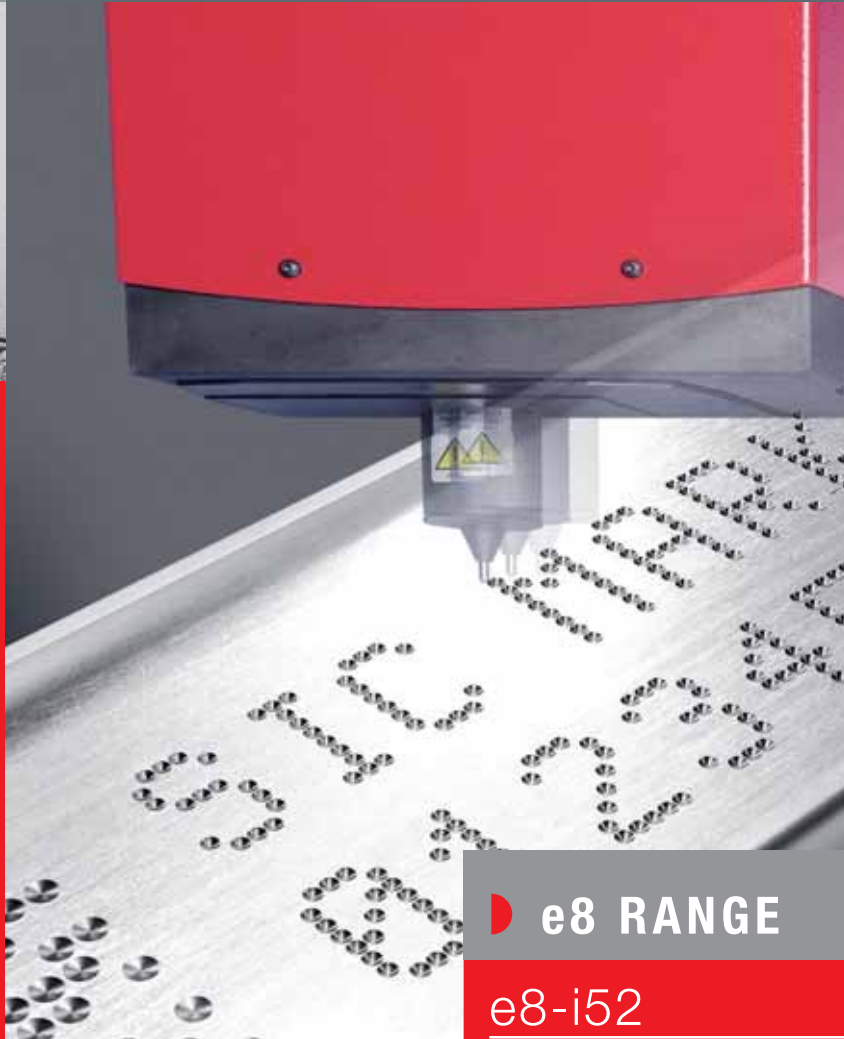




Integrated systems

Dot peen marking heads



► e8 RANGE

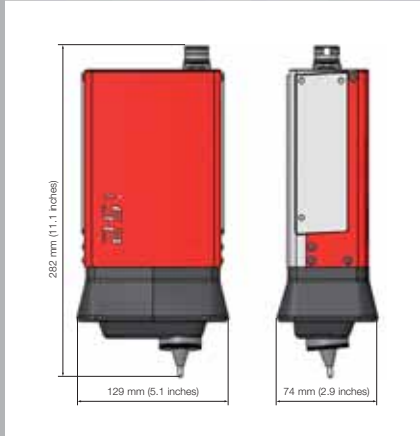
e8-i52

e8-i81

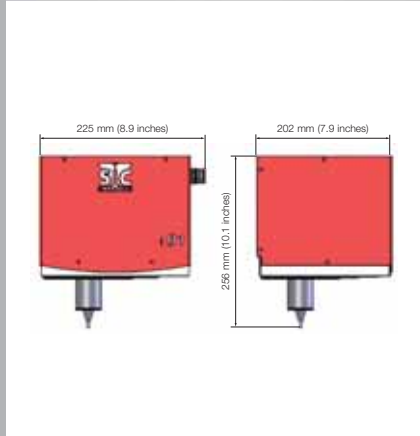
e8-i141



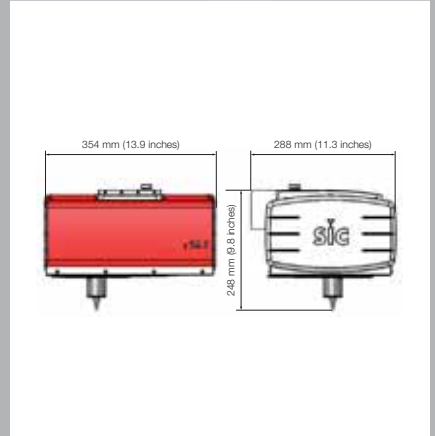
e8-i52



e8-i81



e8-i141



Electrically driven:

- Electromagnetic dot marking stylus assembly
- No air supply required

Low cost of ownership:

- No consumables
- No maintenance required

Robust and reliable:

- Fully enclosed system
- Protection bellows
- Designed for heavy use in industrial environments

High performance:

- Constant precision and quality
- High stylus to part distance variation tolerance
- High speed
- Powerful integrated software
- Large marking window
(150 x 100 mm / 5.9 x 3.9 inches for i141)

Simple and user-friendly:

- Straightforward integration (3 mounting areas for i52)
- Compact (i52)
- Removable robotic cable
- Simple programming

Wide range of options

MECHANICAL TECHNICAL FEATURES

	i52	i81	i141
Marking window	50 x 20 mm / 2 x 0.8 inches	80 x 70 mm / 3.1 x 2.7 inches	150 x 100 mm / 5.9 x 3.9 inches
Weight	3.2 Kg / 7.1 lb	9.4 Kg / 20.7 lb	12 Kg / 26.5 lb
Robotic cable	5 m / 196.8 inches (option 10 m / 393.7 inches and 15 m / 590.5 inches)		
Stylus	Carbide 60 mm / 2.36 inches (option up to 150 mm / 5.9 inches - limited to 80 mm / 3.1 inches for i52)		
Protective bellows	Rubber	Steel	Steel
Part detection	-	Available with autosensing function (i81-A)	Available with autosensing function (i141-A)

OPTIONS



Z axis stroke 50 mm / 2 inches to 250 mm / 9.8 inches



Autosensing



Offset stylus assembly



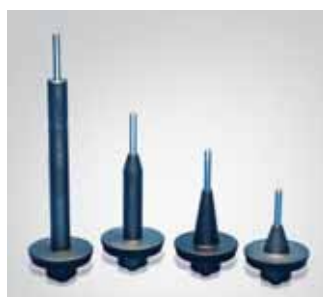
Bar-code and Data Matrix reader



Multi stylus system



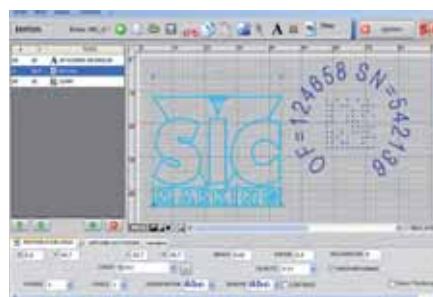
Deep marking



Stylus and guides



Maintenance kit



PC-based software



e8



e8c

- Fully programmable
- Data Matrix marking
- Angular and circular marking
- Marking history and auto diagnostic functions
- Standalone operation (no PC required)
- Industrial membrane keyboard
- Fully enclosed controller (IP40)
- Large graphical screen

ELECTRONIC TECHNICAL FEATURES

	e8	e8c
Dimensions (d x l x h)	322 x 413 x 112 mm / 12.7 x 16.2 x 4.4 inches	223 x 413 x 112 mm / 8.8 x 16.2 x 4.4 inches
Weight	5.4 Kg / 11.9 lb	4.9Kg / 10.8 lb
LCD screen	115 x 65 mm / 4.5 x 2.5 inches	-
Keyboard	Qwerty integrated, membrane overlay	-
Power	300 Watt	
Power supply	Single phase, 85 to 260 VAC, 50 to 60 Hz	
Number of controlled axis	2 (3rd and 4th axis optional)	
Operating temperature	From 5 to 40°C / 40 to 105°F	

Software

Marking files	Up to 2000
Memory	512 Ko
Alphanumeric characters	Serial number, date coding
Logos	Download from PC
Data Matrix	Up to 348 characters, 48 x 48 dots
Fonts	Arial, Courier, OCR, OCRA (custom fonts optional)
Style	Angular, radial, inverse, mirror
Speed	Up to 5 characters/sec.
Character size	From 0.1 mm / 0.004 inches to 99 mm / 4 inches (restricted by marking window size)
Impact force	9 adjustable levels
Depth	Up to 0.5 mm / 0.02 inches (depending on material marked)
Resolution between dots	0.05 mm / 0.002 inches
Maximum stylus stroke	Up to 9 mm / 0.35 inches
Work shift management	10 shifts
Password protection	3 security levels
Historical function	Available by password
Maintenance assistance	Auto diagnostic component
Software	15 languages

Communications

Ports	RS232, RS422, USB (RS485 and TCP/IP Ethernet optional)
Inputs/Outputs	16
External keyboard input	MINI DIN
External output	5 V - 0.5 A and 24 V - 0.5 A
Logos	Logo creation and transfer software
File backup on PC	Controller/PC transfer software
Database link	Optional

SIC Marking® ACTIVITIES

PERMANENT MARKING



CONVENTIONAL MARKING



DOT PEEN



SCRIBING



LASER

INDUSTRIAL VISION



INDUSTRIAL VISION

TURNKEY SOLUTIONS



TURNKEY SOLUTIONS



SIC Marking® equipment is available worldwide. Contact us to be directed towards a distributor serving your area.



SIC Marking®

13, route de Limonest
Zac de la Braille
69380 Lissieu - France
Tel.: +33 (0)4 72 54 80 00
Fax: +33 (0)4 78 47 39 40
www.sic-marking.com
info@sic-marking.com

