



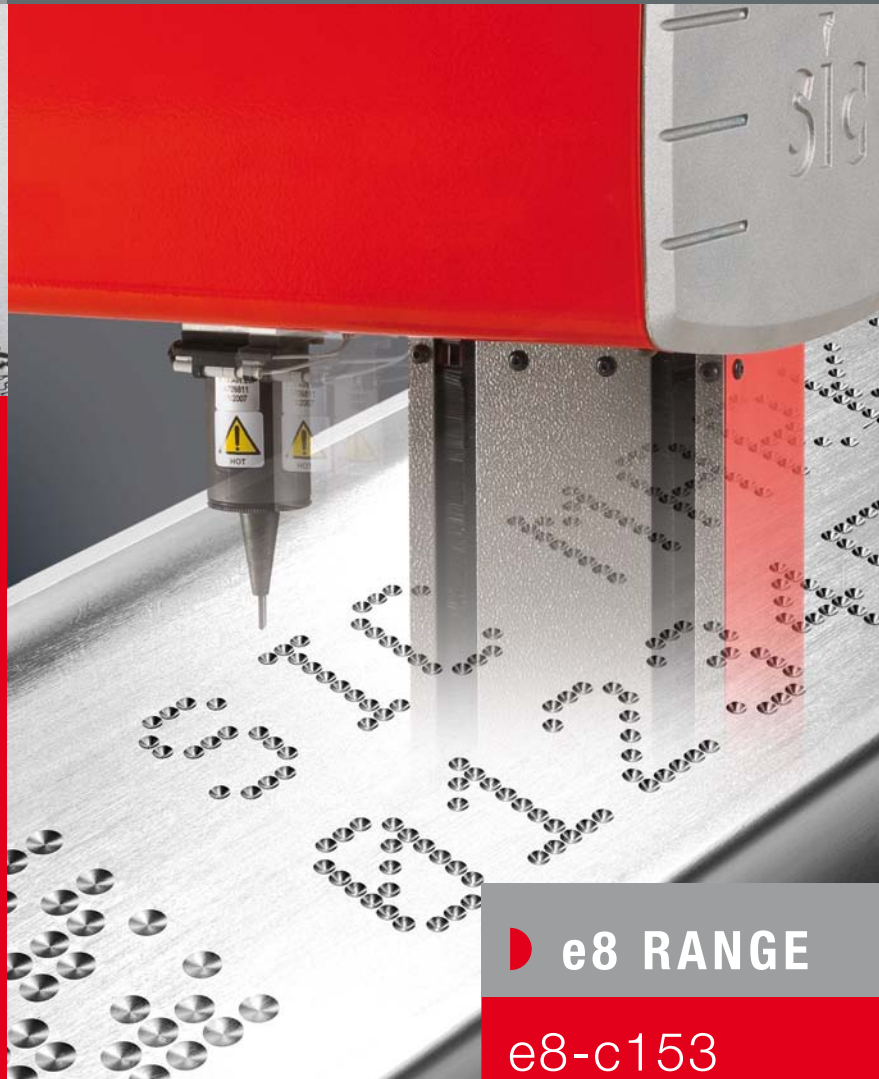
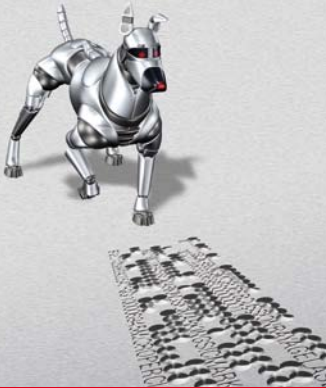
COLUMN-MOUNTED



DOT PEEN

# Column-mounted systems

Standalone dot peen marking stations



**e8 RANGE**

e8-c153

e8-c303

e8-c151-z-A

# e8-c153

**Integrated counter**

## Speed and accuracy

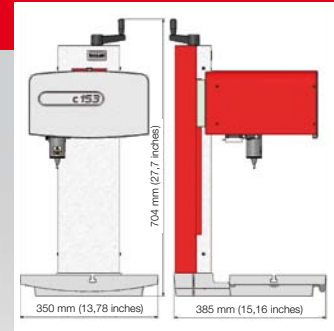
- quality and accuracy of the guides (0,02 mm / 0,0008 inches)
- Speed : up to 3000 parts/day
- High performance software

## Easy and cost-effective maintenance

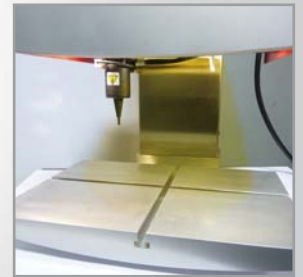
- Easy mechanic adjustment
- Easy programming

## Robustness and reliability

- Foundry base
- Mechanic and stylus assembly designed for intensive use
- Concept for industrial environment



## LED lightening



# e8-c303

## Wide marking window

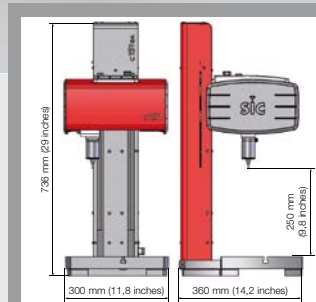
300 x 150 mm / 11.81 x 5.91 inches



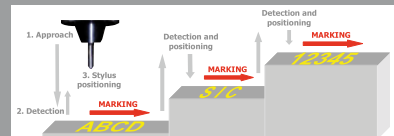
# e8-c151-z-a

## Autosensing

## Rotary (D) axis



**Autosensing**  
Integrated probe for a constant distance stylus-part



## MECHANICAL TECHNICAL FEATURES

	<b>c153</b>	<b>c303</b>	<b>c151-z-A</b>
Marking window	160 x 100 mm / 6,3 x 3,9 inches	300 x 150 mm / 11,81 x 5,91 inches	160 x 100 mm / 6,3 x 3,9 inches (option up to 400 x 300 mm / 15,7 x 11,8 inches)
Weight	28 kg / 61,71 lb	30 kg / 66,1 lb	41 Kg / 90,4 lb
Stylus	Carbide 60 mm / 2.36 inches (option up to 150 mm / 5.9 inches)		
Column stroke	270 mm with a 60 mm stylus 250 mm with a 80 mm stylus	270 mm with a 60 mm stylus 250 mm with a 80 mm stylus	Up to 250 mm / 9.8 inches (longer stroke available)
Part detection	-	-	Autosensing function
Z axis speed	-	-	Up to 50 mm/sec. / 2 inches/sec.

## OPTIONS



Rotary axis



Support plate



Tag feeder



Bar-code and  
Data Matrix reader



Column counter



Specific marking window



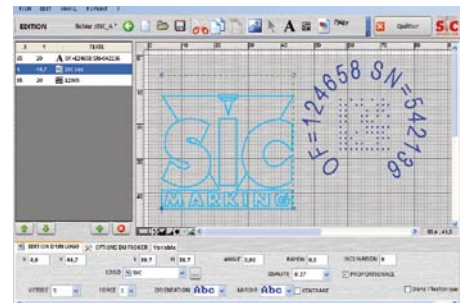
Extended column



Stylus and guides



Maintenance kit



PC-based software



**e8**



**e8c**

- Fully programmable
- Data Matrix marking
- Angular and circular marking
- Marking history and auto diagnostic functions
- Standalone operation (no PC required)
- Industrial membrane keyboard
- Fully enclosed controller (IP40)
- Large graphical screen

## ELECTRONIC TECHNICAL FEATURES

	<b>e8</b>	<b>e8c</b>
Dimensions (d x l x h)	322 x 413 x 112 mm / 12.7 x 16.2 x 4.4 inches	223 x 413 x 112 mm / 8.8 x 16.2 x 4.4 inches
Weight	5.4 Kg / 11.9 lb	4.9 Kg / 10.8 lb
LCD screen	115 x 65 mm / 4.5 x 2.5 inches	-
Keyboard	Qwerty integrated, membrane overlay	-
Power	300 Watt	
Power supply	Single phase, 85 to 260 VAC, 50 to 60 Hz	
Number of controlled axis	2 (3rd and 4th axis optional)	
Operating temperature	From 5 to 40°C / 40 to 105°F	

### Software

Marking files	Up to 2000
Memory	512 Ko
Alphanumeric characters	Serial number, date coding
Logos	Download from PC
Data Matrix	Up to 348 characters, 48 x 48 dots
Fonts	Arial, Courier, OCR, OCRA (custom fonts optional)
Style	Angular, radial, inverse, mirror
Speed	Up to 5 characters/sec.
Character size	From 0.1 mm / 0.004 inches to 99 mm / 4 inches (restricted by marking window size)
Impact force	9 adjustable levels
Depth	Up to 0.3 mm / 0.012 inches on metals (depending on material marked)
Resolution between dots	0.05 mm / 0.002 inches
Maximum stylus stroke	Up to 8 mm / 0.32 inches
Work shift management	10 shifts
Password protection	3 security levels
Historical function	Available by password
Maintenance assistance	Auto diagnostic component
Software	15 languages

### Communications

Ports	RS232, RS422, USB (RS485 and TCP/IP Ethernet optional)
Inputs/Outputs	16
External keyboard input	MINI DIN
External output	5 V - 0.5 A and 24 V - 0.5 A
Logos	Logo creation and transfer software
File backup on PC	Controller/PC transfer software
Database link	Optional

## SIC Marking® ACTIVITIES

PERMANENT MARKING



CONVENTIONAL MARKING



DOT PEEN



SCRIBING



LASER

INDUSTRIAL VISION



INDUSTRIAL VISION

TURNKEY SOLUTIONS



TURNKEY SOLUTIONS



SIC Marking® equipment is available worldwide. Contact us to be directed towards a distributor serving your area.



### SIC Marking®

13, route de Limonest  
Zac de la Braille  
69380 Lissieu - France  
Tel.: +33 (0)4 72 54 80 00  
Fax: +33 (0)4 78 47 39 40  
[www.sic-marking.com](http://www.sic-marking.com)  
[info@sic-marking.com](mailto:info@sic-marking.com)

