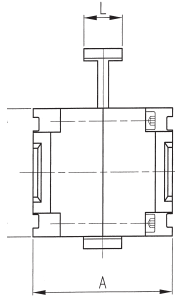
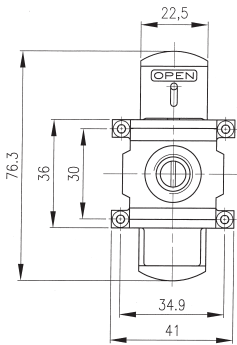


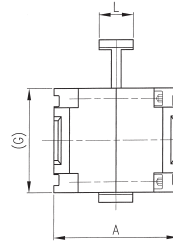
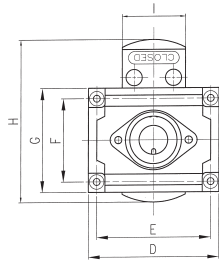
The lockable valve is a 3-way 2-position manual valve. In the closed position it enables discharge of the downstream system of the air preparation equipment. An optional lock (supplied upon request) allows the user not to pressurize the system accidentally

	HZ0P... Size 0	HZ1P... Size 1	HZ2P... Size 2
Threaded port	G 1/4	G 1/4 - G 3/8 - G 1/2	G 3/8 - G 1/2 - G 3/4
Flowrate NI/min (6 bar inlet pressure, 5 bar outlet pressure - Δp 1 bar)	3850	G 1/4 - 5190	G 3/8 - 6150
		G 3/8 - 6250	G 1/2 - 7150
		G 1/2 - 7100	G 3/4 - 7300
Max. inlet pressure bar - MPa - psi	10 - 1 - 145		
Min/max. temperature °C	5 ÷ 60		
Weight in kg	0,21	0,25	0,45

HZ0P...

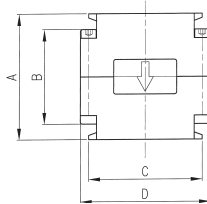
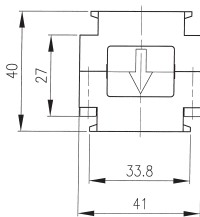


**HZ1P...
HZ2P...**



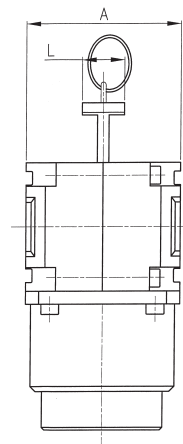
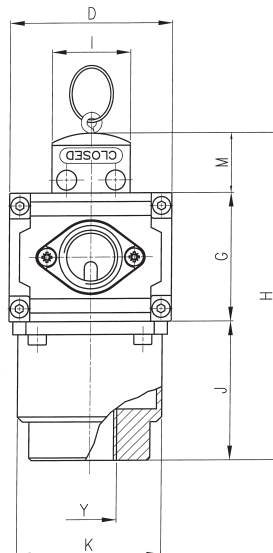
Overall dimensions

	Size 1	Size 2
A	60	83
D	63	80
G	50	50
H	127,5	127,5
I	30,5	30,5
J	54	54
Y	G 1/2	G 1/2
K	56	56
L	16,5	16,5
M	23,5	23,5



Lockable valve with silencer and oversize drain

**HZ1PS...
HZ2PS...**



Overall dimensions

	Size 1	Size 2
A	60	83
D	63	80
G	50	50
H	127,5	127,5
I	30,5	30,5
J	54	54
Y	G 1/2	G 1/2
K	56	56
L	16,5	16,5
M	23,5	23,5