

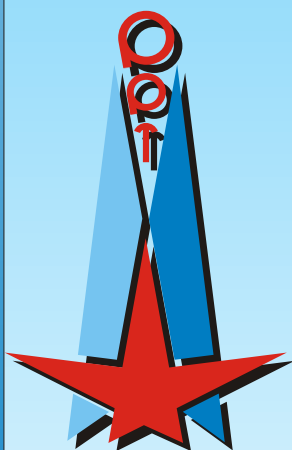
Sadržaj



PPT-Industrijska pneumatika



VENTILI



PPT Industrijska pneumatika
Cara Dušana 101, 37240 Trstenik
Srbija

Kontakt telefoni:

Direktor: +381 (0) 37 712 232
Marketing služba: 713 889
711 635
713 489
Komercijalna služba: 713 487
713 556
Poslovnica Beograd: +381 (0) 11 26 48 074
Fax: +381 (0) 37 713 870

<http://www.pptindpneum.co.yu>

E-mail: pptindpneum@ppt.co.yu
pptindpneum@sezampro.yu

Izdanje : Jun 2006 god.

VENTILI



PRVA PETOLETKA

PPT-Industrijska pneumatika

Tel. +381 37/712-232; 713-889; 713-487; 713-489; 714-469; 711-635 fax 037/713-870

Cara Dušana 101, 37240 Trstenik web: www.pptindpneum.co.yu

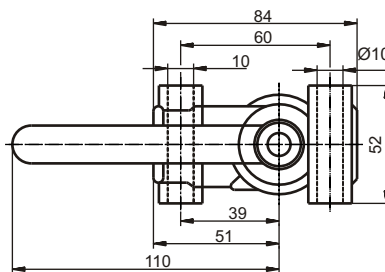
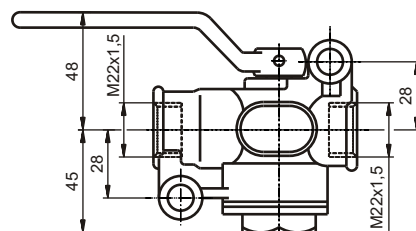
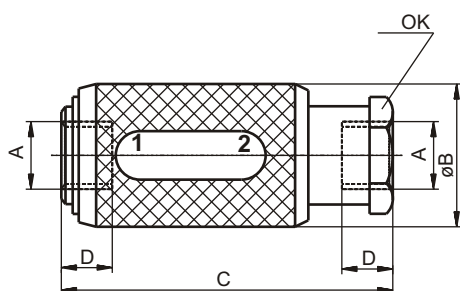
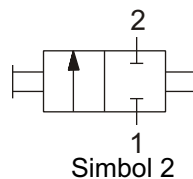
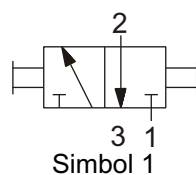
SADRŽAJ

VENTILI

1. Slavine	1
2. Ventili sigurnosti.....	2
3. Nepovratni,blokirajući ventili	3
4. Duplonepovratni,duplozaporni ventili.....	4
5. Brzoispusni ventili.....	5
6. Prigušni i prigušno nepovratni ventili.....	6-8



SLAVINE



1-dovod
2-odvod
3-rasteretni vod

Slika 1

Fabrički broj	Simbol	NO	A	B	C	D	OK
236-111 000	1	6	M14x1.5	30	73	12	22
236-112 000		6	G1/4	30	73	12	22
236-115 000		10	M16x1.5	32	78	12	24
236-116 000		10	G3/8	32	78	12	24
236-119 000		15	M22x1.5	40	82	14	32
236-120 000		15	G1/2	40	82	14	32
236-085 000		20	M27x2	46	100	16	36
236-086 000		20	G3/4	46	100	16	36
236-083 000		25	M33x2	53	111	18	41
236-084 000		25	G1	53	111	18	41
Medijum	vazduh pod pritiskom filtriran, zauljen ili nezauljen						
Radni pritisak	max 16 bar						
Tem. oblast primene	-25 do +80°C						

Slika 2

Fabrički broj	5 247 02 107 0	5 247 01 106 0
Simbol	1	2
Nazivni otvor (NO) — upust	8 mm	
ispust	5.5 mm	
Medium	vazduh pod pritiskom filtriran, zauljen ili nezauljen	
Priključni navoj	M22x1.5	
Radni pritisak	max 8 bar	
Tem. oblast primene	-25 do +70°C	



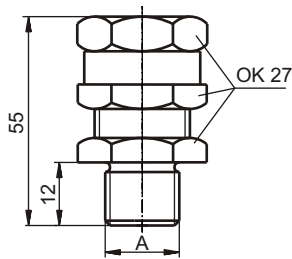
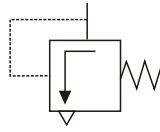
PRVA PETOLETKA

PPT-Industrijska pneumatika

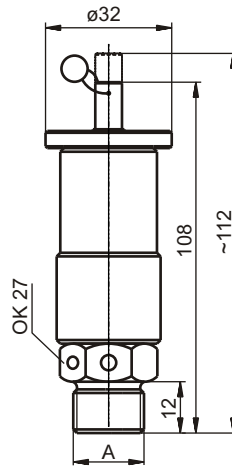
Tel. +381 37/712-232; 713-889; 713-487; 713-489; 714-469; 711-635 fax 037/713-870

Cara Dušana 101, 37240 Trstenik web: www.pptindpneum.co.yu

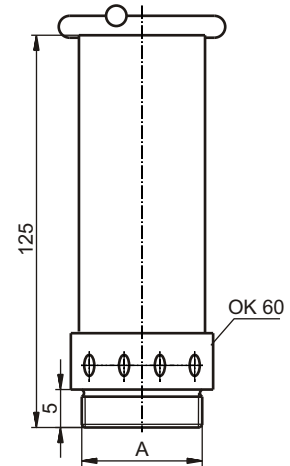
VENTILI SIGURNOSTI



Slika 1



Slika 2



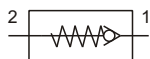
Slika 3

Fabrički broj	NO	Priključak (A)	pritisak otvaranja (bar)	Slika	Masa (kg)				
234-041 000	5	M22x1.5	6	1	0.115				
234-041 000/1			5.2						
234-041 000/2			2.4						
234-041 000/3			3.1						
234-041 000/4			4						
237-508 000			2						
237-672 000			1.2						
236-998 000			1.5						
121-10 700			8.5						
237-031 000 M			10			M22x1.5	4.5	2	0.33
237-031 100 M	5.5								
237-031 200 M	8.5								
237-031 300 M	11								
237-031 400 M	7.5								
237-031 500 M	9.3								
237-031 600 M	3.5								
237-031 700 M	10.5								
237-031 000 R	10	G 1/2		4.5	3				
237-031 100 R				5.5					
237-031 200 R			8.5						
237-031 300 R			11						
237-031 600 R			3.5						
237-031 800 R			4						
236-410 000			40	G1 1/2A		8			
236-410 000/1						5.2			
236-410 000/2						2.4			
236-410 000/3						3.1			
236-410 000/4	4								
236-410 000/5	9.5								
236-410 000/6	2								
Medijum	vazduh pod pritiskom filtriran, zauljen ili nezauljen								
Tem. oblast primene	-20 do +80°C								

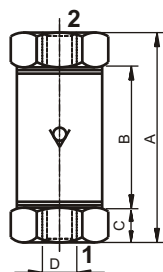


NEPOVRATNI, BLOKIRAJUĆI VENTILI

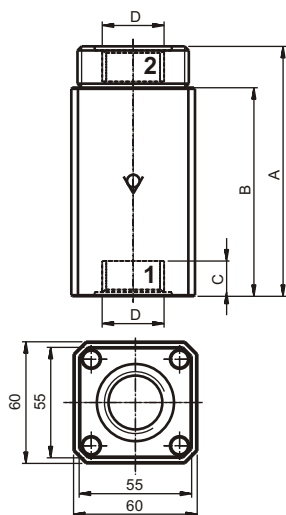
Nepovratni ventili



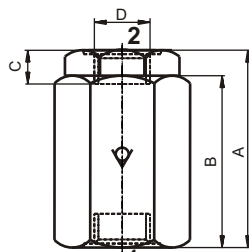
Simbol 1



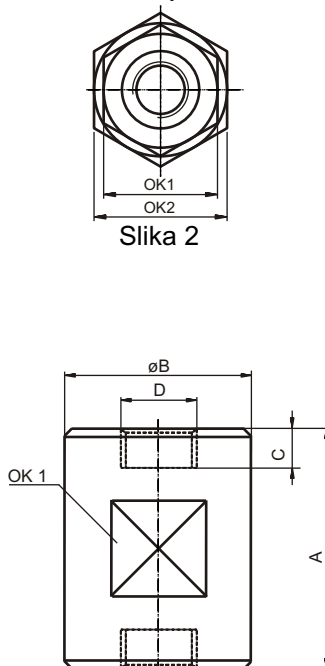
Slika 1



Slika 3

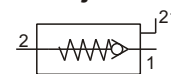


Slika 2

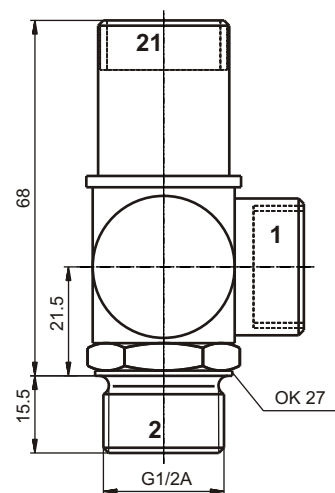


Slika 4

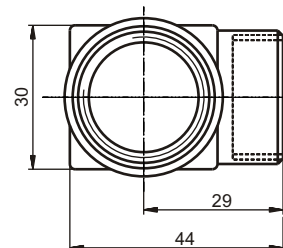
Blokirajući ventili



Simbol 2



Slika 5



1-dovod
2-odvod
3-upravljački vod

Fabrički broj	Simbol	NO	Slika	Protok (l/min)	A	B	C	D	OK1	OK2
237-507 000	1	2	1	120	30	20	5.2	M5	14	
236-810 000		4	2	400	46	42	8	M10x1	19	22
236-811 000		4	2	400	46	42	8	G1/8	19	22
236-372 100		8	2	1400	57	50	12	M14x1.5	24	27
236-385 000		12	2		72	56	14	M22x1.5	32	36
236-723 000		12	2		72	56	14	G1/2	32	36
236-911 000		20	3	8000	97	65	18	G3/4		
236-982 000		25	3	8500	106	84	20	M33x2		
236-855 000		25	3	8500	106	84	20	G 1		
242-243 000		40	4		111	90	20	G 2	80	

blokirajući
242-306 000

2

8.6

5

1540

Vreme (ms)
uključenje 8
isključenje 17

Medijum

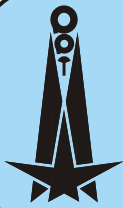
vazduh pod pritiskom filtriran, zauljen ili nezauljen

Radni pritisak

0,5-10 bar

Tem. oblast primene

-20 do +80°C



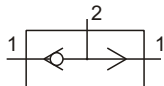
PRVA PETOLETKA

PPT-Industrijska pneumatika

Tel. +381 37/712-232; 713-889; 713-487; 713-489; 714-469; 711-635 fax 037/713-870

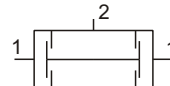
Cara Dušana 101, 37240 Trstenik web: www.pptindpneum.co.yu

DUPLONEPOVRATNI, DUPLOZAPORNI



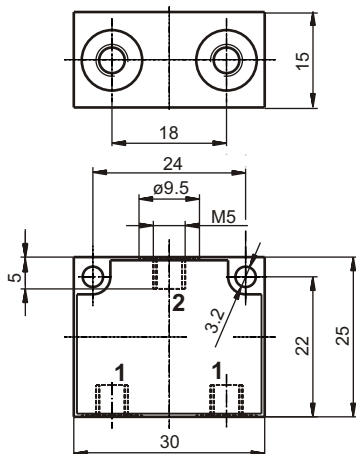
Duplonepovratni ventili

Simbol 1

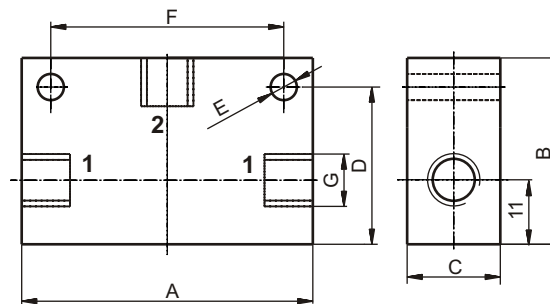


Duplozaporni ventili

Simbol 2



Slika 1



Slika 2

1-dovod
2-odvod

Fabrički broj	Simbol	Slika	NO	Protok (l/min)	Priključak G	A	B	C	D	E	F	
237-505 000	1	1	2	98	M5							
237-480 000			4	600	M10x1	40	30	20	25	5.5	30	
237-830 000		2	2	4	600	G1/8	40	32	16	27	4.5	24
236-363 000				5	1200	M14x1.5	50	30	25	24	5.5	40
237-831 000				5	1200	G1/4	55	45	20	37	6.6	35
237-506 000	2	1	2	98	M5							
237-481 000			4	600	M10x1	40	30	20	25	5.5	30	
237-832 000		2	2	4	1200	G1/8	55	45	16	37	6.6	35
236-362 000				5	1200	M14x1.5	50	30	25	24	5.5	40
Medijum	vazduh pod pritiskom filtriran, zauljen ili nezauljen											
Radni pritisak	1- 10 bar											
Tem. oblast primene	-20 do +80°C											



prva petoletka

PPT-Industrijska pneumatika

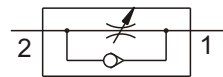
Tel. +381 37/712-232; 713-889; 713-487; 713-489; 714-469; 711-635 fax 037/713-870

Cara Dušana 101, 37240 Trstenik web: www.pptindpneum.co.yu

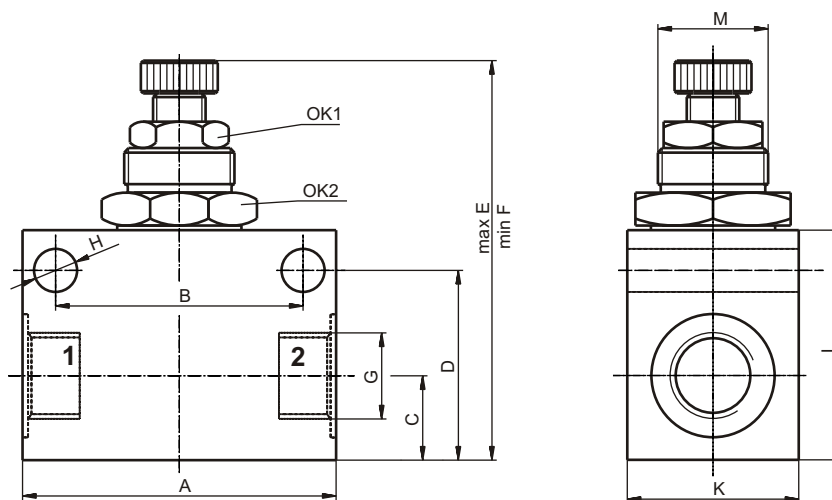
PRIGUŠNI I PRIGUŠNO NEPOVRATNI



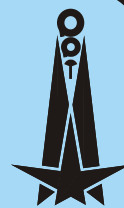
Simbol 1



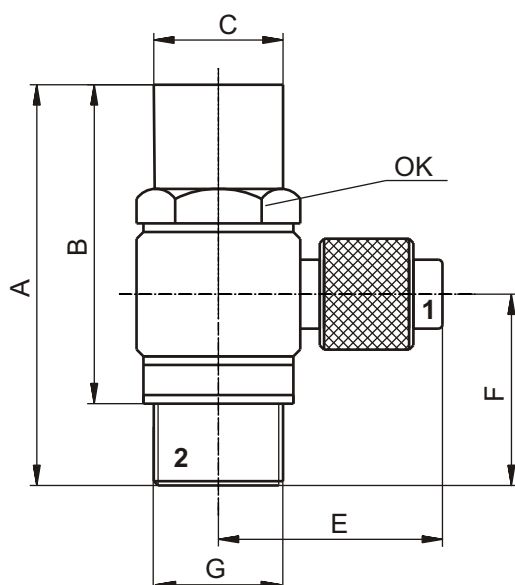
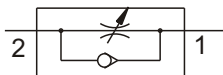
Simbol 2



Fabrički broj	Simbol	NO	Priključak G	Protok (l/min)	Masa(kg)	A	B	C	D	E	F	H	K	L	M	OK1	OK2
242-295 600	1	1.8	M5	80	0.02	26	18	7	12.5	50	41	4.3	14	16	M10x1	8	12
242-295 650	2		M5	80													
242-295 500	1	2	G1/8	125	0.08	32.5	24	9	17.5	49	44	4.3	16	22	M12x1	10	14
242-295 000	2		G1/8	125													
242-295 000M	2		M10x1	125													
242-295 750	1	6	G1/4	1050	0.22	52	35	10	22.5	66	57	6.5	26	28	M20x1.5	13	22
242-295 700	2		G1/4	1050													
242-295 700M	2		M14x1.5	1050													
242-295 900	2	9	G1/2	1600	0.5	68	50	15.5	33	92	76	6.5	30	40	M20x1.5	19	29
237-159 000		12	M22x1.5	2000		75		75	50	120	100	7	40	65		32	36
236-643 000	2	25	G1	8000	1.8	120	78	78	65	208	117	9	58	100	M36x2	46	55
236-979 000			M33x2	8000													
Medijum		vazduh pod pritiskom filtriran, zauljen ili nezauljen															
Radni pritisak		max 10 bar															
Tem. oblast primene		-20 do +80°C															



PRIGUŠNO NEPOVRATNI VENTILI



(NO)	Pr.navoj G	za cev 5/3	za cev 6/4	za cev 8/6	za cev 10/8	A	B	C	E	F	OK	Masa (kg)
1.5	M5	237-544 100				27	22.5	7	16	5.2	8	0.021
3	M10x1	237-620 200	237-621 200	237-622 200	237-623 200	39	32	13	24.5	15.2	14	0.021
	G1/8	237-624 200	237-625 200	237-626 200	237-627 200							
4.5	M14x1.5		237-621 300	237-622 300	237-623 300	46.5	37	15	26	18.2	17	0.035
	G1/4		237-625 300	237-626 300	237-627 300							
6	M18x1.5		237-621 400	237-622 400	237-623 400	46.5	37	19	28	18.2	22	0.5
	G3/8		237-625 400	237-626 400	237-627 400							
7	M22x1.5		237-621 500	237-622 500	237-623 500	50	39	22	30	19.7	27	0.7
	G1/2		237-625 500	237-626 500	237-627 500							
Medijum		vazduh pod pritiskom filtriran, zauljen ili nezauljen										
Radni pritisak		max 10 bar										
Tem. oblast primene		-20 do +80°C										



PRVA PETOLETKA

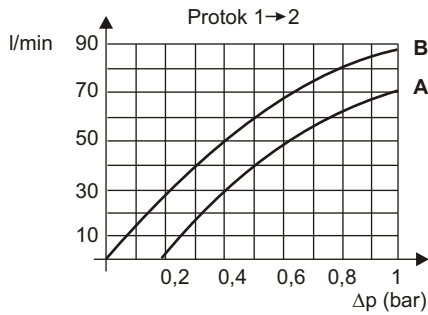
PPT-Industrijska pneumatika

Tel. +381 37/712-232; 713-889; 713-487; 713-489; 714-469; 711-635 fax 037/713-870

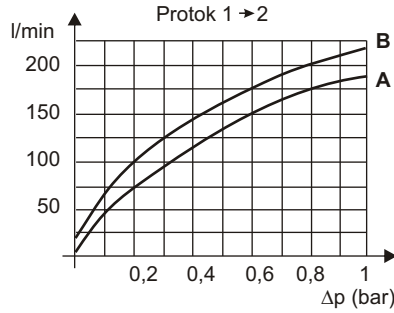
Cara Dušana 101, 37240 Trstenik web: www.pptindpneum.co.yu

PRIGUŠNO NEPOVRATNI VENTILI

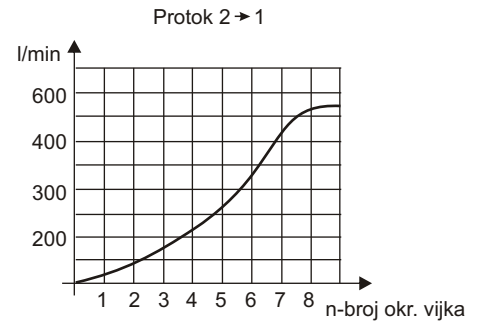
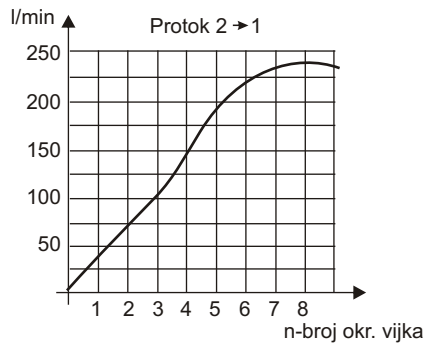
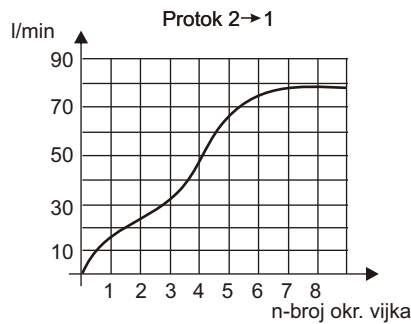
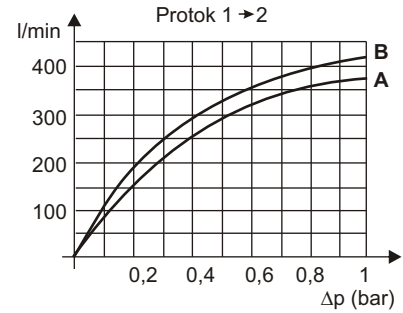
NO 1.5



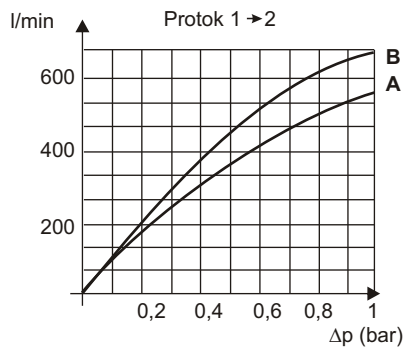
NO 3



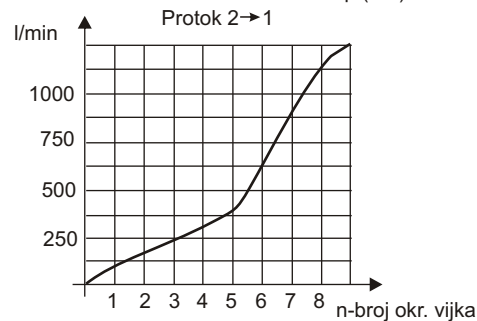
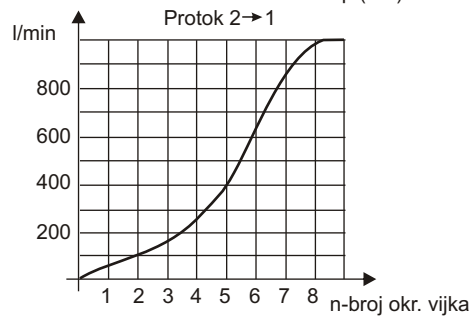
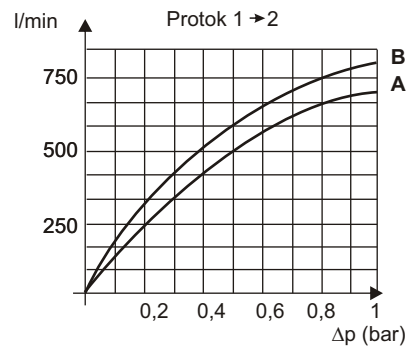
NO 4.5



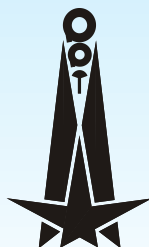
NO 6



NO 7



A - Protok vazduha kroz ventil kada je prigušni vijak zatvoren
B - Protok vazduha kroz ventil kada je prigušni vijak otvoren



prva petoletka
PPT-Industrijska pneumatika

Tel. +381 37/712-232; 713-889; 713-487; 713-489; 711-635 fax 037/713-870

web www.pptindpneum.co.yu

37240 TRSTENIK Cara Dušana 101