

# LAGP300

Power pivot



<b>L</b>	<b>A</b>	<b>G</b>	<b>P</b>	<b>3</b>	<b>0</b>	<b>0</b>	<b>V</b>	<b>U</b>	<b>0</b>	<b>9</b>	<b>0</b>	<b>B</b>	
1		2		3			4		5		6		7

<b>1 Series</b>	<b>2 Version</b>	<b>3 Size</b>
-----------------	------------------	---------------

**LAG** = Power pivot with predetermine pivot rotation in degrees

**P** = Pneumatic standard

**300**

<b>4 Table position</b>	<b>5 Sensing style</b>	<b>6 Pivot rotation in degrees</b>
-------------------------	------------------------	------------------------------------

**V** = vertical 180°

**O** = horizontal 90°

**Z** = vertical mount style symmetrical to V mount style.

Max. opening angle 120°

**P** = horizontal mount style symmetrical to O mount style.

Max. opening angle 60°

**U** = Electronic sensor with M12 swivel connector, 24 Vcc.

**120** = 120°

**090** = 90°

**060** = 60°

**045** = 45°

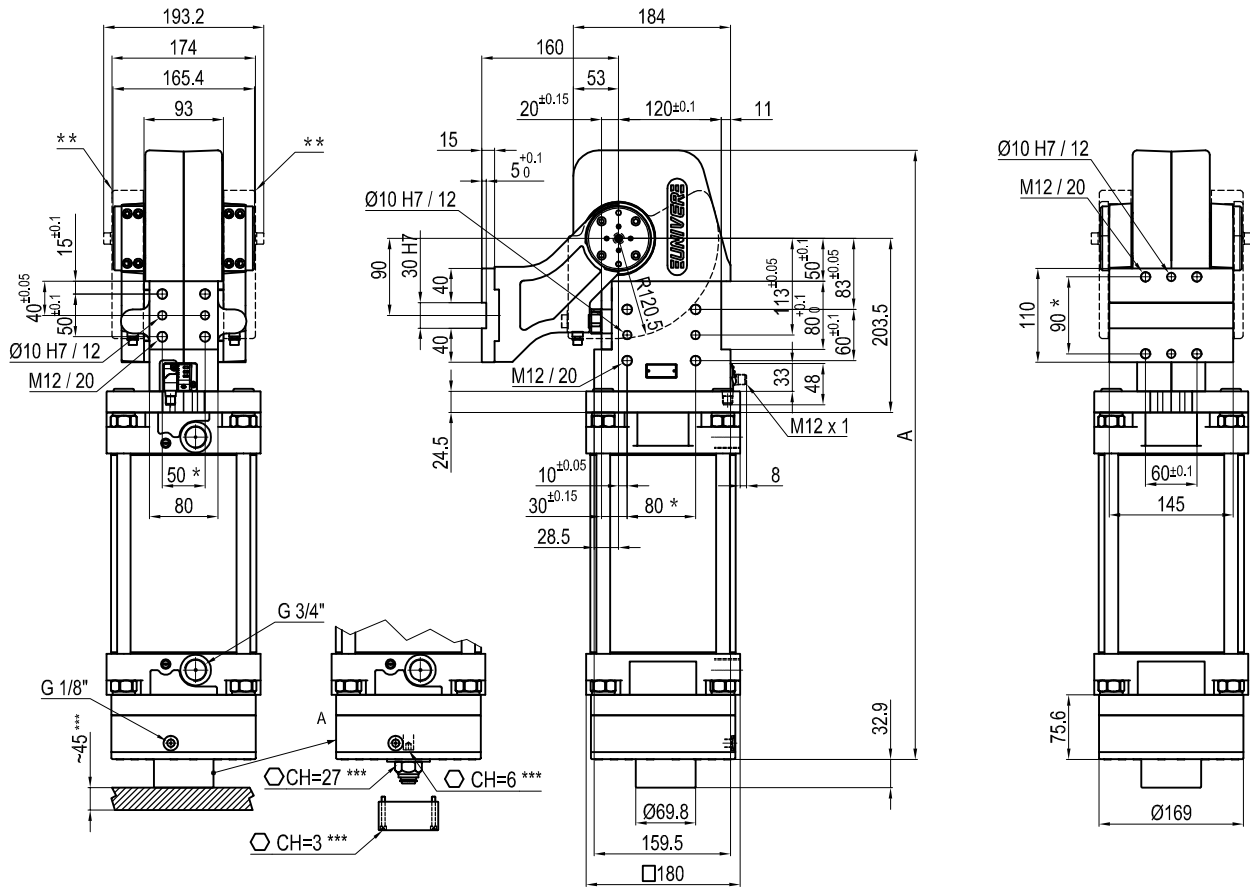
<b>7 Brake system</b>
-----------------------

**B** = With safety brake

**W** = Without safety brake

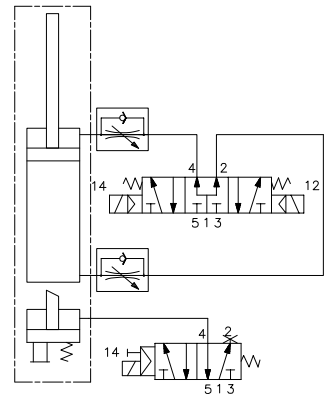
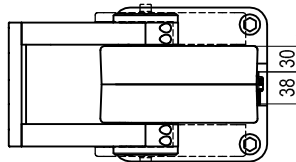


## Pneumatic power pivot



Passive Safety brake:  
it stops in absence of signal  
conforming to 89/392/CEE  
Directive

Pivot rotation in degrees	A
45°	634
60°	648
90°	679
120°	713



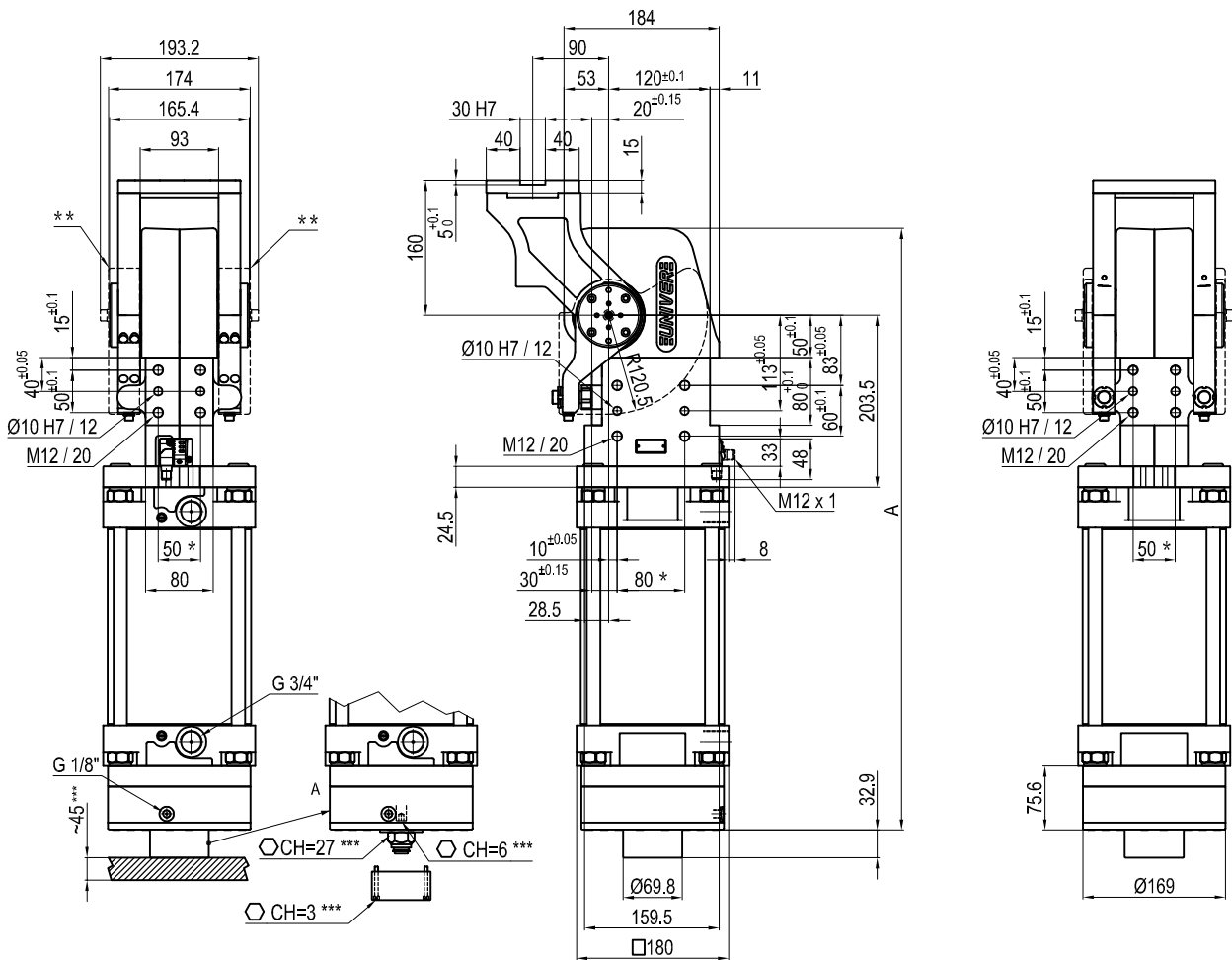
Size	Holding moment	Max. torque at the rotary table 0,55 MPa	Weight
300	6000 Nm	300 Nm	35 Kg

Min./Max. operating pressure: **0,4 / 0,8 MPa**  
 Operating temperature: **5° + 45° C**  
 Predetermine pivot rotation in degrees: **45° - 60° - 90° - 120°**  
 Vertical arm mount position  
 Electronic 24 Vdc sensor with M12 swivel connector that can be orientated at 0° or 90°  
 Protection class: **IP 65**

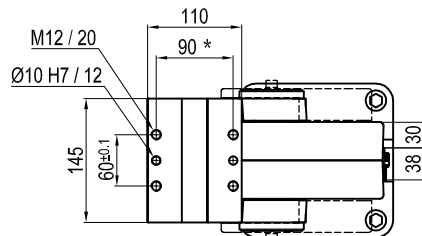
\* : TOLERANCE BETWEEN DOWEL HOLES ± 0.02, TO SCREW HOLES ± 0.1  
 \*\* : TO BE ORDERED SEPARATEL  
 \*\*\* : AREA TO ACCESS THE MANUAL UNBLOCKING OF THE SAFETY BRAKE.

Subject to technical modifications without notice.

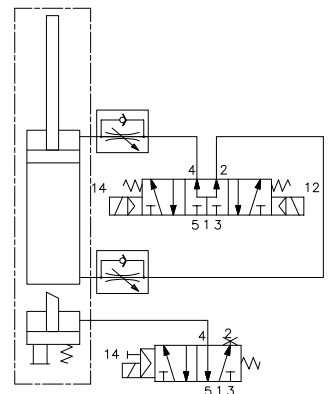
## Pneumatic power pivot



Pivot rotation in degrees	A
45°	634
60°	648
90°	679
120°	713



Passive Safety brake:  
it stops in absence of signal  
conforming to 89/392/CEE  
Directive



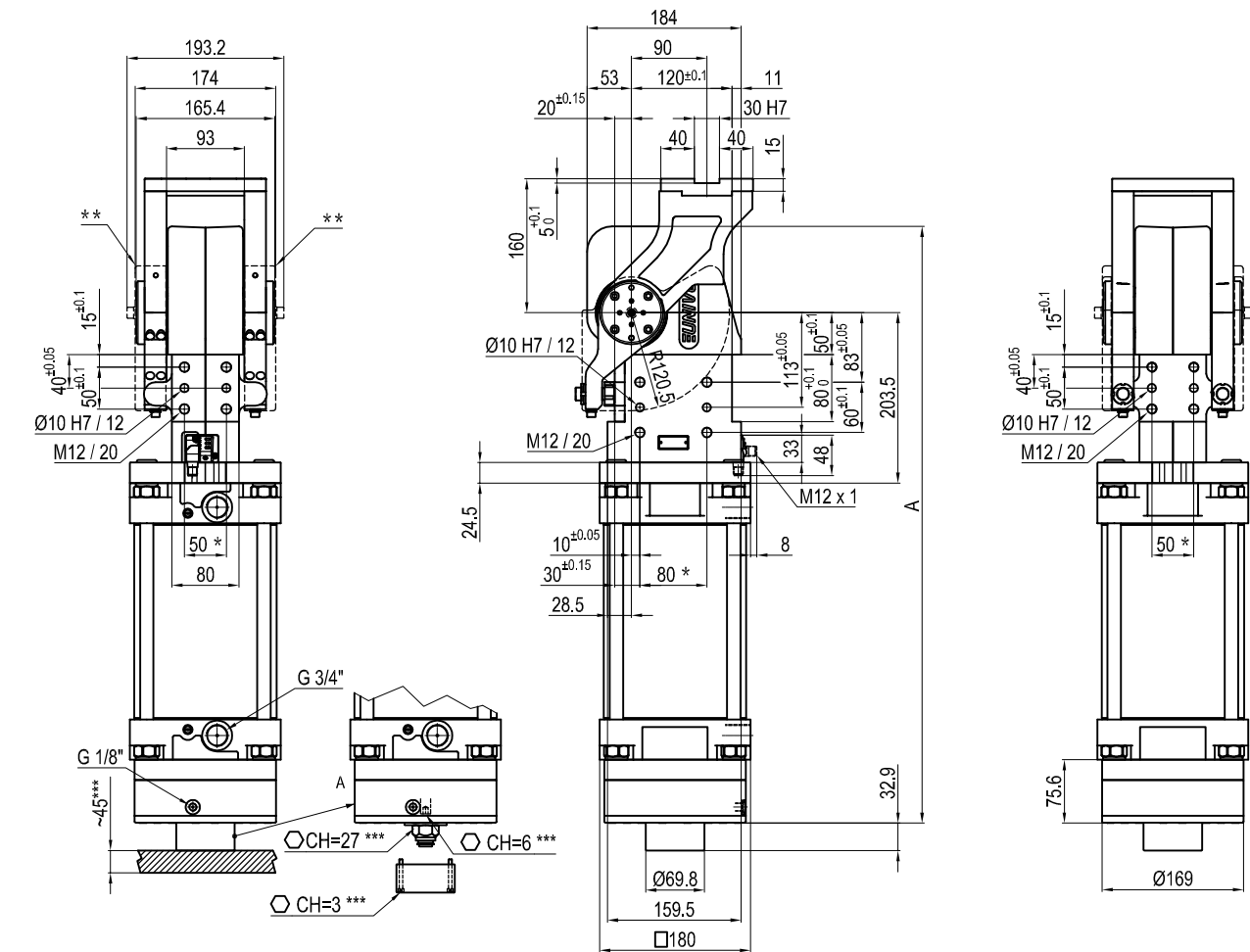
Size	Holding moment	Max. torque at the rotary table 0,55 MPa	Weight
300	6000 Nm	300 Nm	35 Kg

Min./Max. operating pressure: **0,4 / 0,8 MPa**  
 Operating temperature: **5° ÷ 45° C**  
 Predetermine pivot rotation in degrees: **45° - 60° - 90° - 120°**  
 Horizontal arm mount position  
 Electronic 24 Vdc sensor with M12 swivel connector that can be orientated at 0° or 90°  
 Protection class: **IP 65**

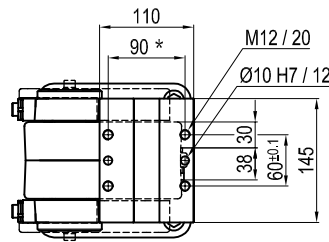
\* : TOLERANCE BETWEEN DOWEL HOLES ± 0.02, TO SCREW HOLES ± 0.1  
 \*\* : TO BE ORDERED SEPARATEL  
 \*\*\* : AREA TO ACCESS THE MANUAL UNBLOCKING OF THE SAFETY BRAKE.

Subject to technical modifications without notice.

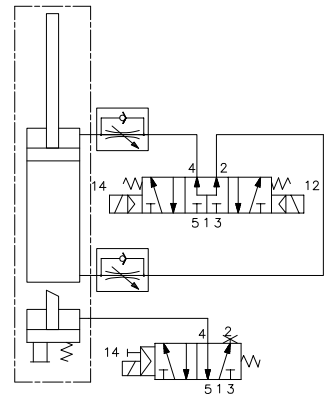
## Pneumatic power pivot



Pivot rotation in degrees	A
45°	634
60°	648



Passive Safety brake:  
it stops in absence of signal  
conforming to 89/392/CEE  
Directive



Size	Holding moment	Max. torque at the rotary table 0,55 MPa	Weight
300	6000 Nm	300 Nm	35 Kg

Min./Max. operating pressure: **0,4 / 0,8 MPa**

Operating temperature: **5° ÷ 45° C**

Predeterminate pivot rotation in degrees: **45° - 60°**

Horizontal arm mount position

Electronic 24 Vdc sensor with M12 swivel connector that can be orientated at 0° or 90°

Protection class: **IP 65**

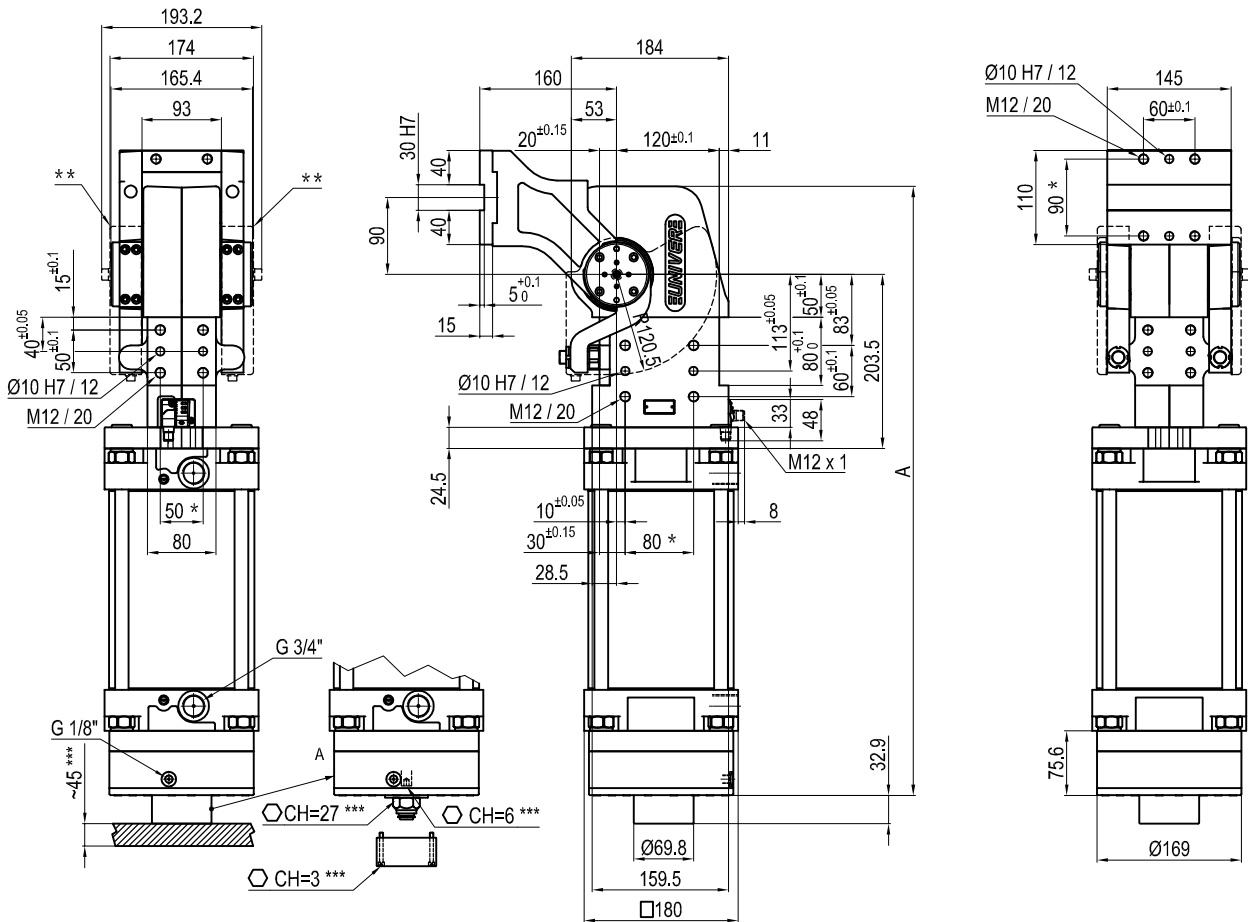
\* : TOLERANCE BETWEEN DOWEL HOLES ± 0.02, TO SCREW HOLES ± 0.1

\*\* : TO BE ORDERED SEPARATELY

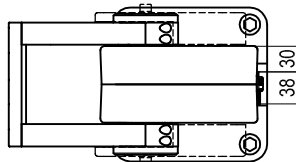
\*\*\* : AREA TO ACCESS THE MANUAL UNBLOCKING OF THE SAFETY BRAKE.

Subject to technical modifications without notice.

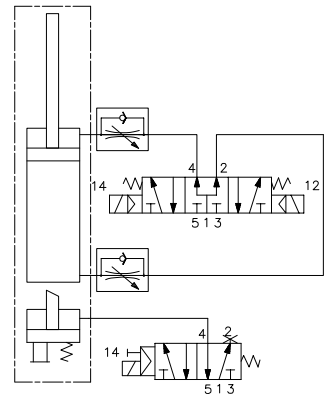
## Pneumatic power pivot



Pivot rotation in degrees	A
45°	634
60°	648
90°	679
120°	713



Passive Safety brake:  
it stops in absence of signal  
conforming to 89/392/CEE  
Directive



Size	Holding moment	Max. torque at the rotary table 0,55 MPa	Weight
300	6000 Nm	300 Nm	35 Kg

Min./Max. operating pressure: **0,4 / 0,8 MPa**

Operating temperature: **5° ÷ 45° C**

Predeterminate pivot rotation in degrees: **45° - 60° - 90° - 120°**

Vertical arm mount position

Electronic 24 Vdc sensor with M12 swivel connector that can be orientated at 0° or 90°

Protection class: **IP 65**

\* : TOLERANCE BETWEEN DOWEL HOLES ± 0.02, TO SCREW HOLES ± 0.1

\*\* : TO BE ORDERED SEPARATELY

\*\*\* : AREA TO ACCESS THE MANUAL UNBLOCKING OF THE SAFETY BRAKE.

Subject to technical modifications without notice.