

AC-N

NAMUR valve

- Mixed commutation system (spool-poppet)
- High flow rate
- Quick response time
- High cycle rates
- Control: pneumatic, electric
- Suitable for rotating pneumatic actuators used in industrial plants for the distribution of fluids
- NAMUR VDI/VDE 3845 interface



TECHNICAL FEATURES

Ambient temperature	-10 ÷ 45 °C
Fluid temperature	-10 ÷ 50 °C
Fluid	filtered air 50 µm, lubricated or not
Commutation system	poppet mixed system
Ways/Positions	5/2
Pressure	10 bar max
Control	pneumatic, electric
Return	pneumomechanical spring, pneumatic, electric
Connections	1-3-5: G1/4 2-4: NAMUR interface
Nominal Ø	8 mm
Nominal flow rate	1200 NI/min

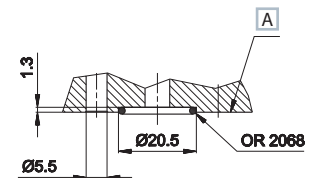
TECHNICAL FEATURES

Valve body	zamak
Seals	polyurethane - nitrile rubber
Actuators	technopolymer
Spool	aluminium

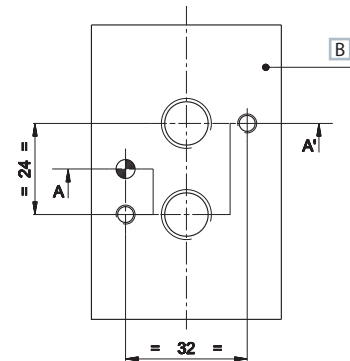
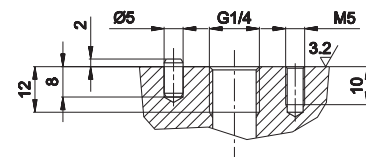
ELECTRIC FEATURES

Electropilot	U1
Coil	DA
Power consumption	3,5 W (DC) - 5 VA (AC)
Connector	AM-5110
Voltage	12 V DC - 24 V DC - 24 V AC - 110 V AC - 230 V AC
Manual override	with 2 position screw

NAMUR interface



A-A' section



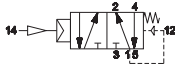
- A Electrovalve surface
- B Flange surface

Upon request:



2
Standardized valves

Single pneumatic impulse

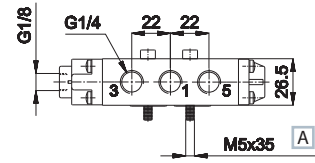
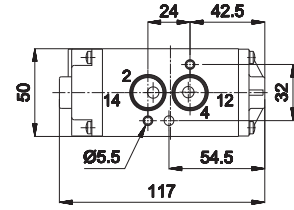


A ISO 4762

- 1 = Supply port
- 2 - 4 = Use
- 3 - 5 = Exhaust
- 14 = Control
- 12 = Return

Control	Return	Pressure bar	Times (ms)		Weight Kg	Part no.
			En.	De-en.		
pneumatic amplified	pneumo mechanical spring	2,3÷10	10	10	0,564	AC-N8100

5/2



Double pneumatic impulse

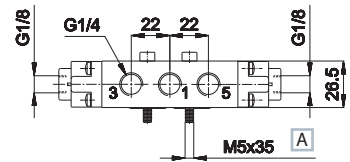
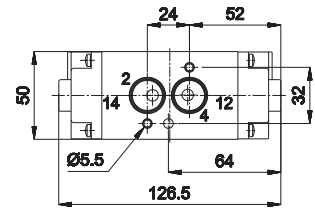


A ISO 4762

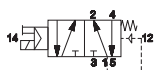
- 1 = Supply port
- 2 - 4 = Use
- 3 - 5 = Exhaust
- 14 = Control
- 12 = Return

Control	Return	Pressure bar	Times (ms)		Weight Kg	Part no.
			En.	De-en.		
pneumatic amplified	pneumatic amplified	0,8÷10	6	6	0,564	AC-N8120

5/2



Single electric impulse



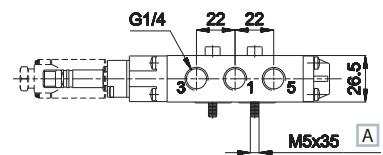
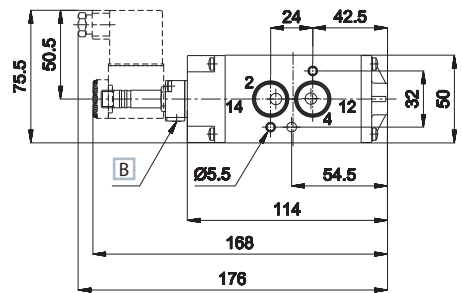
A ISO 4762

B Manual override

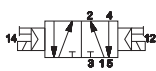
- 1 = Supply port
- 2 - 4 = Use
- 3 - 5 = Exhaust
- 14 = Control
- 12 = Return

Control	Return	Pressure bar	Times (ms)		Weight Kg	Part no.
			En.	De-en.		
electric amplified	pneumo mechanical spring	2,3÷10	22	22	0,6	AC-N8500

5/2



Double electric impulse



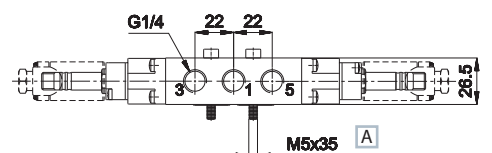
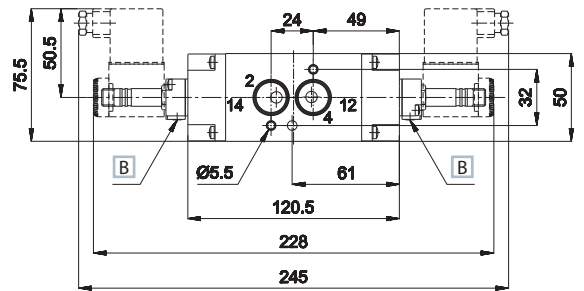
A ISO 4762

B Manual override

- 1 = Supply port
- 2 - 4 = Use
- 3 - 5 = Exhaust
- 14 = Control
- 12 = Return

Control	Return	Pressure bar	Times (ms)		Weight Kg	Part no.
			En.	De-en.		
electric amplified	electric amplified	0,8÷10	14	14	0,636	AC-N8520

5/2



Upon request 3/2 version
Electrovalves are supplied without coil, connector and locking ring