

3C30	Pump weight and dimensions mm						
	A	B	C	D	E	F	Kg.
3C30 P10	365	85	85	¾"	¾"	580	170
3C30 P20-25	365	85	85	1"	¾"	580	170
3C30 P30-35	365	85	85	1"	¾"	580	180
3C30 P40	370	105	115	1 ¼"	1"	600	190
3C30 P50	370	120	120	1 ½"	1 ¼"	600	200

Electric motors and gearboxes weight and dimensions								
KW	2.2	3	4	5.5	7.5	9.2	10	15
L mm.	964	963	1003	1109	1249	1334	1443	1490
H mm.	594	593	633	739	879	964	1073	1120
Kg.	44	49	55	82	113	136	141	151

3C80	Pump weight and dimensions mm.						
	A	B	C	D	E	F	Kg.
3C80 P30-35	590	126	110	1 ½"	1"	1045	570
3C80 P40-45	607	165	136	2"	1 ½"	1067	620
3C80 P50-55	607	170	151	2"	1 ½"	1067	670
3C80 P60-65	610	190	170	2 ½"	1 ½"	1085	710
3C80 P70-75	610	190	190	2 ½"	2"	1085	710
3C80 P80	610	190	190	3"	2 ½"	1090	710

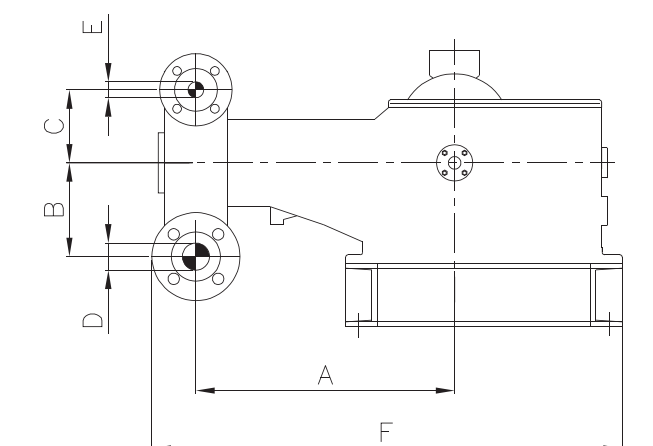
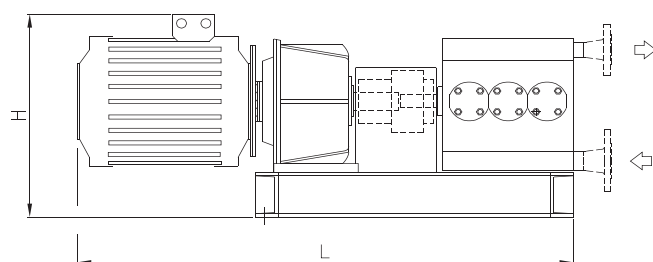
Electric motors and gearboxes weight and dimensions								
KW	9.2	15	18.5	22	30	37	45	55
L mm.	1415	1536	1748	1833	1889	2048	2048	2110
H mm.	589	626	634	634	649	672	672	702
Kg.	171	242	267	369	459	620	640	710

3C120	Pump weight and dimensions mm.						
	A	B	C	D	E	F	Kg.
3C120 P30-35	670	150	150	1 ½"	1"	1225	980
3C120 P40-45	670	160	150	2"	1 ½"	1225	1000
3C120 P50-55	675	190	160	2 ½"	2"	1235	1030
3C120 P60-65	675	205	170	3"	2"	1235	1050
3C120 P70-75	675	215	195	4"	3"	1235	1080
3C120 P80-85	698	260	215	5"	4"	1280	1150
3C120 P90	700	260	260	5"	4"	1285	1250
3C120 P100	700	265	265	6"	5"	1285	1300
3C120 P110	710	265	265	6"	5"	1305	1450
3C120 P120	710	265	265	6"	5"	1305	1450

Electric motors and gearboxes weight and dimensions							
KW	37	45	55	75	90	110	
L mm.	2444	2612	2674	2950	2950		
H mm.	605	725	755	875	875		
Kg.	499	640	710	985	1050		

3C55	Pump weight and dimensions mm						
	A	B	C	D	E	F	Kg.
3C55 P30-35	482	133	110	1 ½"	1"	821	470
3C55 P40-45	497	161	136	2"	1 ½"	846	485
3C55 P50-55	497	170	141	2"	1 ½"	846	510
3C55 P60-65	497	170	141	2 ½"	1 ½"	847	530
3C55 P70	502	190	190	2 ½"	12"	861	550

Electric motors and gearboxes weight and dimensions							
KW	5.5	7.5	9.2	15	18.5	22	30
L mm.	1244	1382	1503	1503	1715	1715	1856
H mm.	537	637	729	834	842	842	942
Kg.	82	92	141	151	206	282	459



EXACTA

YOUR DOSING PARTNER

Bono Exacta S.p.A. Via Resistenza, 12
20068 Peschiera Borromeo - Milano - Italy
Tel: +39-0255302848 - Fax: +39-025471955
E-mail: exacta@bono.it - Web: www.bono.it



03/02

EXACTA
EXACTA
EXACTA
EXACTA
EXACTA
EXACTA

"3C TRIPLEX"
Three Plunger Reciprocating Pumps

EXACTA
EXACTA
EXACTA
EXACTA
EXACTA
EXACTA

EXACTA

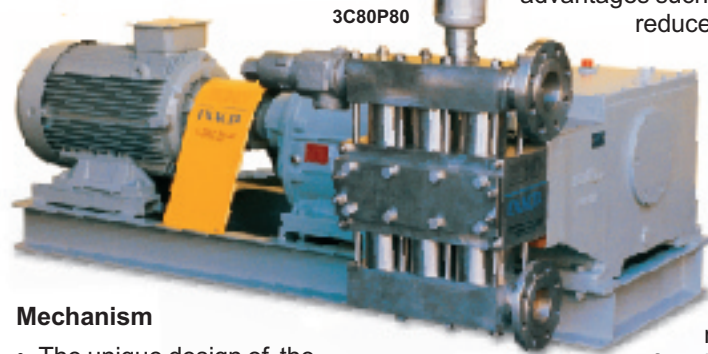
YOUR DOSING PARTNER



Pumps and dosing systems

"3C" TRIPLEX three plungers reciprocating pumps to API 674

3C TRIPLEX pumps, designed according to API 674 Standards, represent the result of the long BOND EXACTA experience in applications such as heavy and continuous industrial processes where reliability and durability are essential conditions.



3C80P80

Mechanism

- The unique design of the mechanism allows the pump operation at very low speed without forced lubrication or cooling requirement, which makes "3C" pumps suitable for applications where a slow plunger motion is required e.g. to suck and pump viscous liquids, hot products or liquids having a low vapour pressure.
- Silent and vibrationless operation due to a correct mass balancing and sizing, the integral crankshaft is supported with roller bearings at both ends; also the crossheads are supported at both ends giving a very precise alignment of the plungers and prolonging the packing life
- Compact and rugged construction that means high performances in limited overall dimensions.



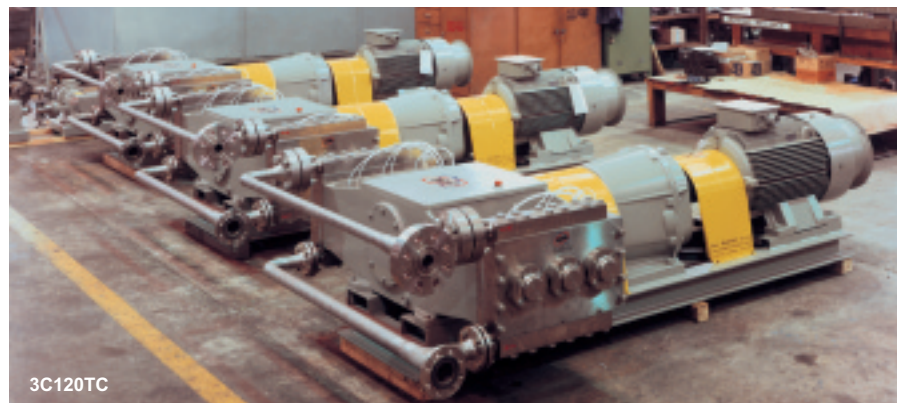
- Low speed design results in high reliability.

Pump head

The three cylinders pump head is horizontally arranged, the plungers are single acting, valves and seats can be selected between different executions depending from the handled medium; the low speed of the pumps gives some interesting advantages such as:

- reduced wear of the moving parts in general and specifically reduced wear of the plungers, valves and packing. Plungers and packing maintenance is much simplified, in fact the replacement of such components can be done from the front of the pump head without disconnecting the pump from the piping (except 3C30 models).

"TC" EXECUTION, the peculiar design of the pumps allows to fit two pump heads on the same mechanism, therefore the capacities shown on the "Selection Table" can be doubled.



3C120TC



3C30

3C55



SW3C80

"SW3C", a complete line of pumps equipped with hydraulic diaphragm pumpheads designed for the transfer of abrasive suspensions, slurries, and dangerous liquids.

All pumps can be equipped with different drives according to the process requirements; the most common transmissions driven by electric motors are: mechanical speed variator, hydraulic speed variators, electric speed variators (frequency variators)

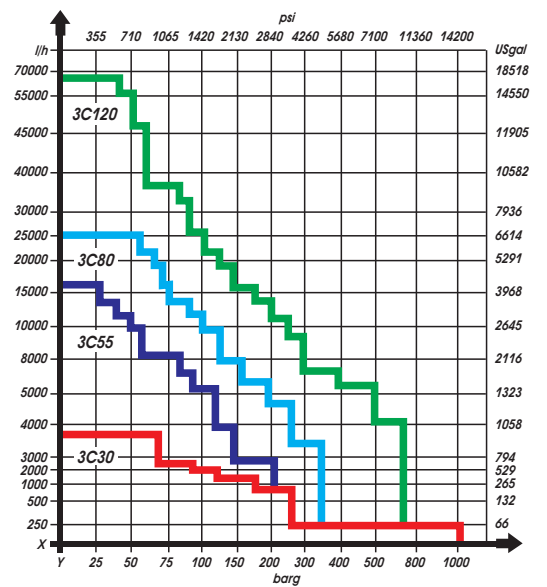
APPLICATIONS

- Oil and Gas:** glycol and methanol well head injection, underground water reinjection into the well
- Iron, steel and metal industry:** in metallurgical plants for descaling.
- Chemical industry:** fatty acids pumping for glycerine production, raw material production for surface-

active, stearine production.

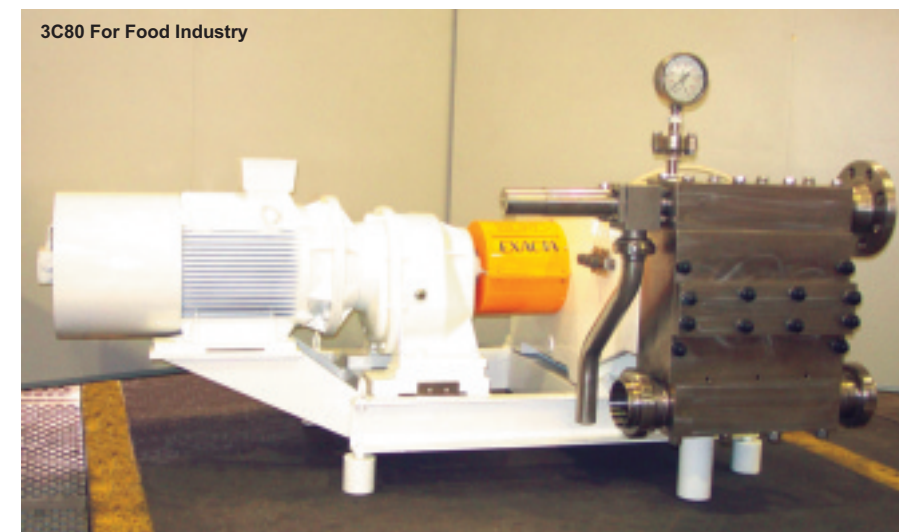
- Water Treatment:** feeding of factory wastes to the wet oxidation treatment plant, reverse osmosis plants
- Desalination:** feeding of the reverse osmosis plants
- Food industry:** feeding of fruit puree to the heat exchanger in the pasteurization process, concentrate of tomato transfer, homogenizers feeding.

SELECTION TABLE

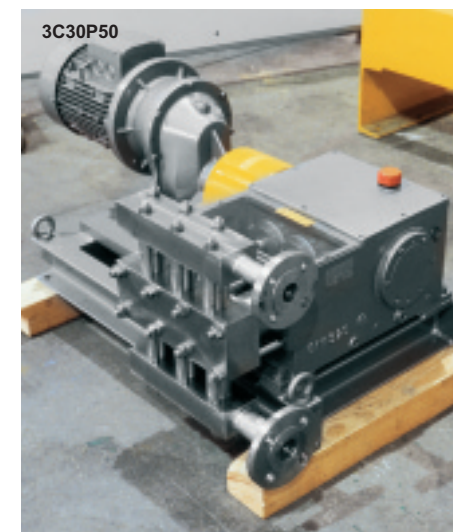


SELECTION TABLE											
MOD	LPH	BARG	MOD	LPH	BARG	MOD	LPH	BARG	MOD	LPH	BARG
3C30P10	242	1150	3C55P30	2.990	214	3C80P30	3.576	370	3C120P30	4.204	728
3C30P20	966	285	3C55P35	4.070	156	3C80P40	6.357	208	3C120P40	7.474	408
3C30P25	1.510	183	3C55P40	5.316	120	3C80P45	8.046	164	3C120P50	11.678	260
3C30P30	2.175	125	3C55P45	6.728	94	3C80P50	9.933	132	3C120P60	16.817	180
3C30P35	2.960	94	3C55P50	8.306	76	3C80P55	12.019	110	3C120P65	19.737	154
3C30P40	3.866	70	3C55P55	10.050	63	3C80P60	14.304	93	3C120P70	22.890	132
3C30P45	4.900	55	3C55P60	11.980	53	3C80P65	16.787	78	3C120P75	26.277	115
3C30P50	6.000	45	3C55P65	14.037	45	3C80P70	19.469	67	3C120P80	29.897	102
			3C55P70	16.279	39	3C80P75	22.350	59	3C120P85	33.751	90
						3C80P80	25.429	52	3C120P90	37.838	80
Max power 15 kW			Max power 30 kW			Max power 55 kW			Max power 110 kW		
600 rpm			450 rpm			370 rpm			290 rpm		

LEGENDA					CONTACT PARTS MATERIAL					
EXECUTION	HEAD BODY	PLUNGERS	VALVES	SEATS	PACKING					
C	Carbon Steel	Stainless			Kevlar					
S	304 SS	steel	316SS	316SS	or					
X	316SS	ceramic lined			PTFE					
F=single wing valve, G=double wing valve, A=single ball valve, B=double ball valve										
Square ring packings										
Pump head execution: C=Carbon Steel, S=316 Stainless Steel, X=304 Stainless Steel										
Plunger Diameter										
Stroke length mm.										
Pump Series										



3C80 For Food Industry



3C30P50