

# Vacuum generators VN-...-A, B, M

**FESTO**



## Fast pick-up!

**Decentralised vacuum + mechanical ejector pulse + electrical actuation.** Reduced cycle times and reliable set down: The new VN vacuum generators, with integrated mechanical ejector pulse, electrical control for decentralized vacuum production ON/OFF or both in combination.

### Shorter cycle times = higher productivity

- Extremely fast evacuation thanks to direct attachment to the suction gripper. Consequently, the cycle times are reduced due to quicker pick-up.
- Combined with the integrated ejector pulse, the depositing of the workpiece is accelerated with maximum safety.

### Economical and reliable operation due to integrated functions

- The ejector pulse and the solenoid valve are fully integrated. A consistent strategy of integrated functions reduces costs and installation space.
- The compact and sturdy construction indicates its minimal interference value.

### Quicker to install:

- The integration of the electrical solenoid valve to switch the vacuum on/off reduces installation time and commissioning to an absolute minimum.



Fast vacuum generation

Fast depositing

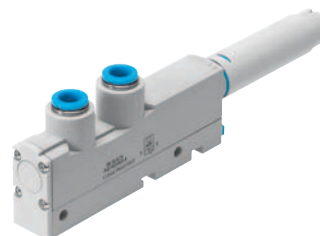
Compact

402.3.PSI →

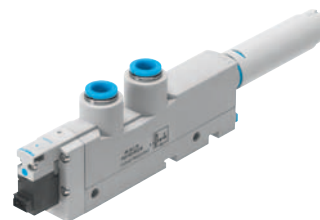
Product Short Information

# Vacuum generators VN-...-A, B, M

Characteristic	VN-...-A,B,M
Connections	G thread, QS push-fit fitting
Design principles	Standard, inline
Variants	High suction flow rate (L type)
	High vacuum (H type), max. vacuum: 90 %
Installation position	Any
Weight [g]	From 49 - 193
Protection class	IP 40
Operating voltage [in VDC]	24
<b>Applications</b>	
Operating pressure [in bar]	1 ... 8 (optimum operating pressure: 5 ... 6)
Operating temperature [in °C]	0 ... 50
Operating medium	Dry, filtered (40 µm), unlubricated compressed air



Vacuum generator with mechanical ejector pulse



Vacuum generator with integrated solenoid valve

## Mech. ejector pulse (VN-...-A)

Whilst the vacuum is being produced an additional reservoir is filled, which, when the input pressure is switched off, produces an ejection pulse, reliably pushing the workpiece away from the suction cup.

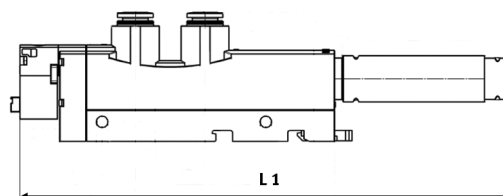
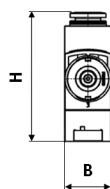
## Vacuum generators VN-...-M

(Solenoid 24 V DC, IP 40)  
Vacuum generation as required:  
The compressed air supply is controlled via an integrated solenoid valve. After connecting the power supply, a vacuum is produced.

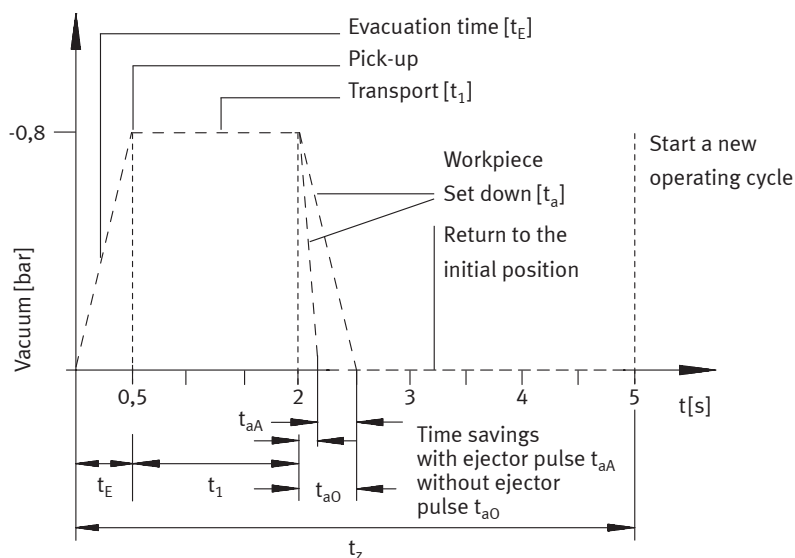
## Vacuum generators VN-...-B

(Combination of A and M)  
The generation of the vacuum is switched on and off via a solenoid valve combined with an ejector pulse as described to the left.

Vacuum generator Type	VN-...-A/-B/-M		VN-...-A	VN-...-B/M
	B	H	L1	L1
VN-05	14	49	111	129
VN-07			120	138
VN-10				
VN-14	18	50	166	189
VN-20/30	24	75	-	235



## Ejector operation cycle (example)



## Festo AG & Co. KG

Ruiter Straße 82  
73734 Esslingen  
Internet [www.festo.com](http://www.festo.com)  
Tel. ++49 (0)711 347-0  
Fax ++49 (0)711 347-21 44  
E-mail [service\\_international@festo.com](mailto:service_international@festo.com)